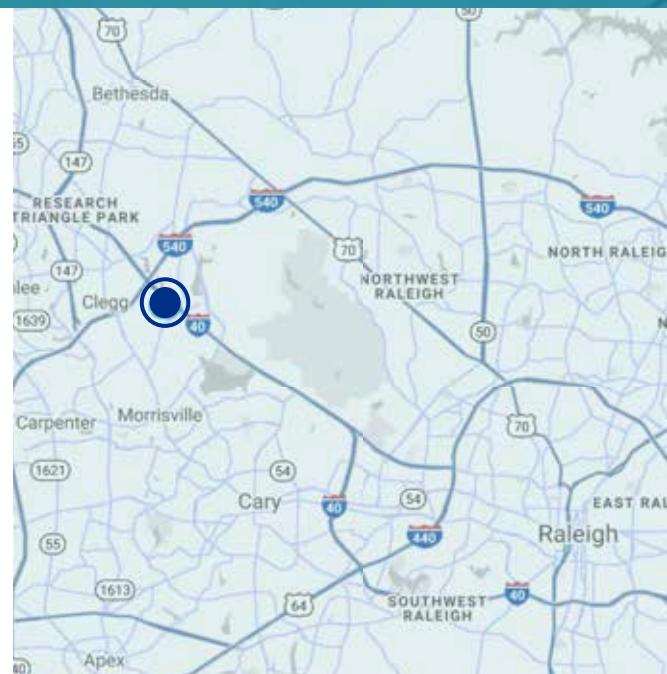


**2880
SLATER ROAD
MORRISVILLE, NC 27560**



OVERVIEW OF THE SPACE

- Two-story brick and glass building with marble foyer/lobby
- Free adjacent surface parking
- Building and monument signage available
- Suite 110: 4,399 SF - *Now*





AREA HIGHLIGHTS

- Located just off I-40 and Airport Boulevard on Slater Road
- Easy access to I-40 and I-540
- Surrounded by numerous restaurants and hotels
- 10 minutes away from RTP, Brier Creek, Lake Crabtree County Park and William B. Umstead State Park

**ASKING
RATE**

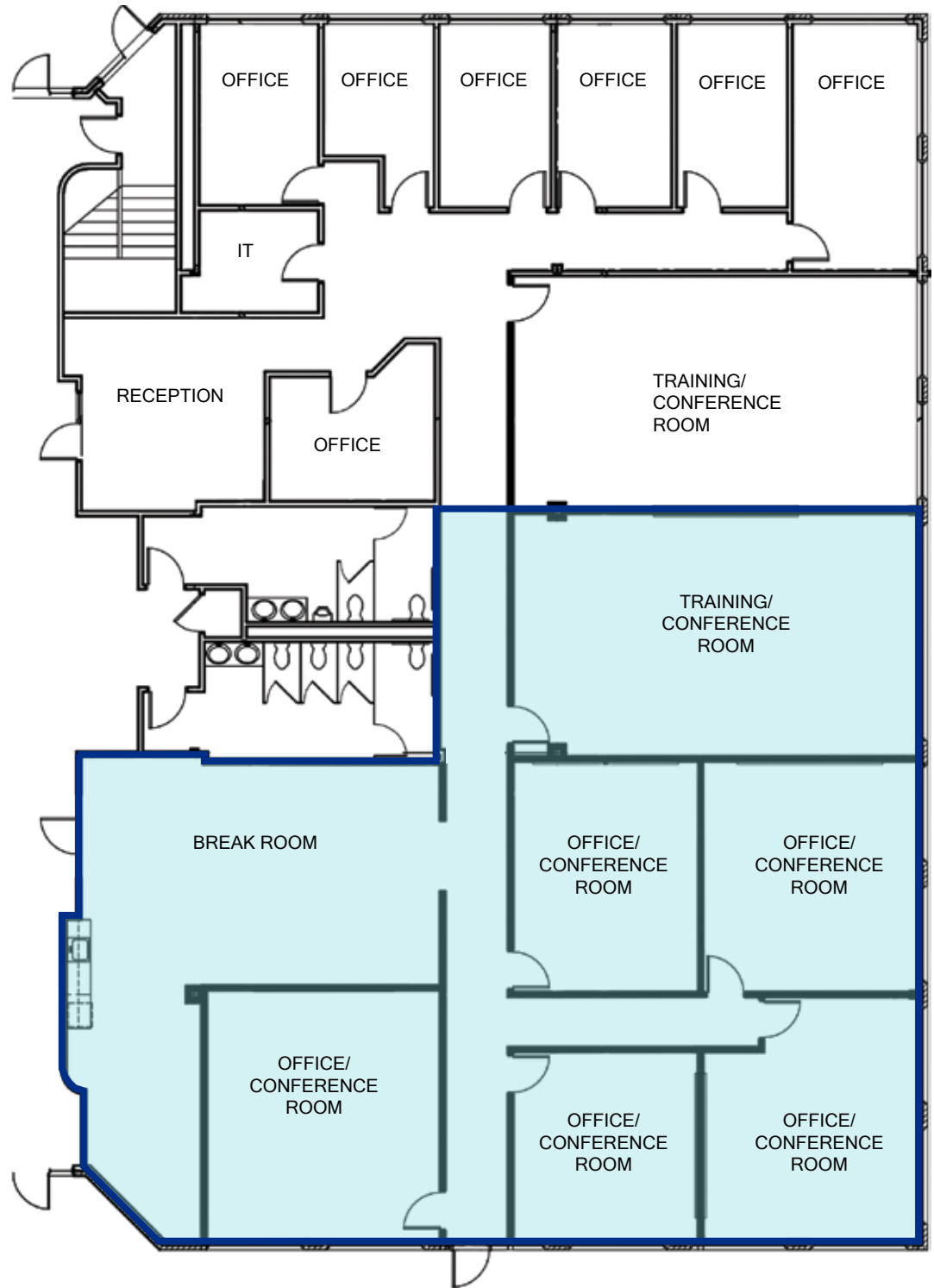
**\$20.00/SF
Full Service**

FRED DICKENS

fdickens@trademarkproperties.com

919.227.5508 direct 919.673.4775 mobile

The information contained herein was obtained from sources believed reliable; however, TradeMark Properties makes no guarantees, warranties, or representations as to the completeness or accuracy thereof. The presentation of this property is submitted subject to errors, omissions, changes of price or conditions prior to sale or lease, or withdrawal without notice.



SUITE 110
4,399 SF

FRED DICKENS

fdickens@trademarkproperties.com
919.227.5508 direct 919.673.4775 mobile