



**TRADEMARK**  
PROPERTIES

# 1310 SE MAYNARD RD

CARY, NC 27511

# EXECUTIVE OFFICES FOR LEASE

## LISTING BROKER:

**KHARMIKA ALSTON**  
919.645.1431 (O) | 919.672.4905 (M)  
KALSTON@TRADEMARKPROPERTIES.COM



1001 WADE AVENUE SUITE 300, RALEIGH, NC 27605  
TRADEMARKPROPERTIES.COM | 919-782-5552

**1310 SE MAYNARD RD  
CARY, NC 27511**

## PROPERTY HIGHLIGHTS

- » Fully furnished executive offices for lease
  - » Office A: 175 SF
  - » Office B: 125 SF
- » Two offices with the following provided:
  - » High Speed Internet 500+mbps
  - » Electricity
  - » Water
  - » Janitorial
  - » Kitchenette Area
  - » Security System
- » Strategically located within a mile of Fenton, a thriving mixed-use development, Epic Games Headquarters, and WRAL Soccer Park, home to NCFC and the Carolina Courage
- » Just three miles from Crossroads Plaza and South Hills Mall, offering convenient access to premier shopping and dining
- » Easy Access to I40 and I440
- » Ten Miles from RDU International Airport
- » Only 12 miles away from Research Triangle Park, providing easy connectivity to one of the region's prominent business hubs

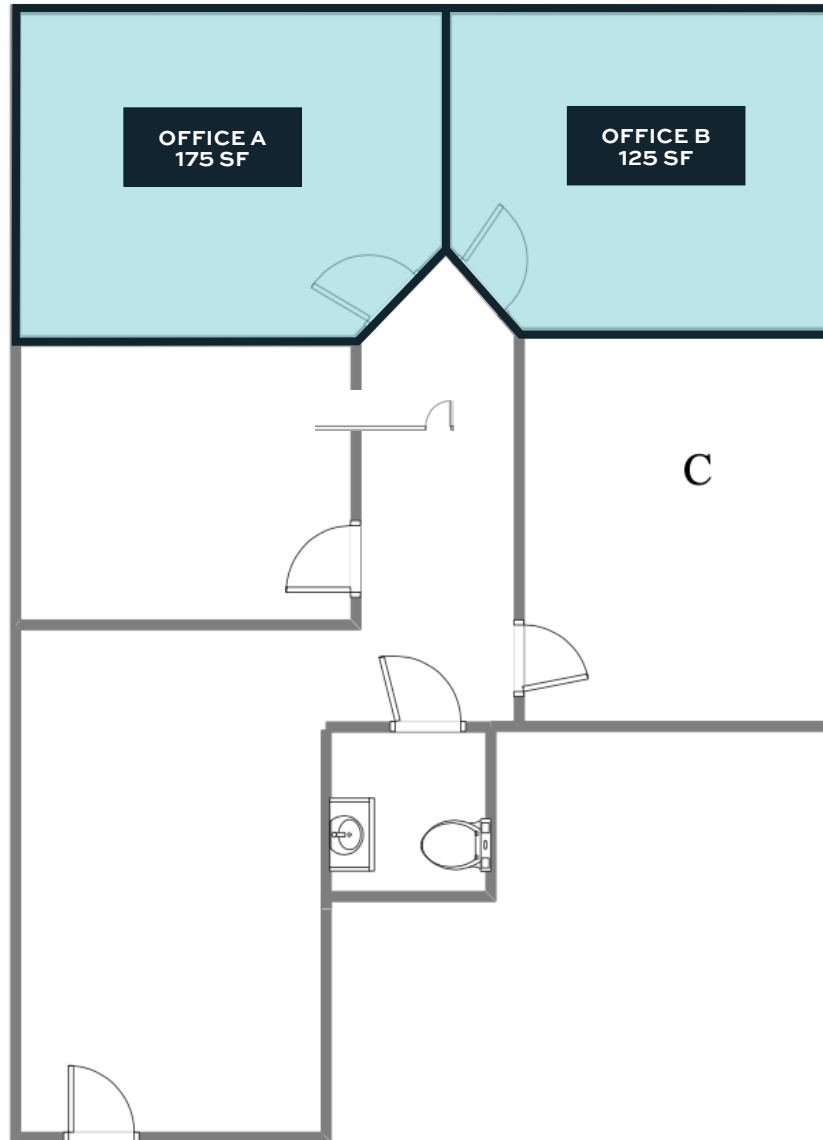


**LEASE RATE:  
OFFICE A: \$750/MONTH  
OFFICE B: \$650/MONTH**

1310 SE MAYNARD RD  
CARY, NC 27511

## FLOOR PLAN

- » Office A: 175 SF
- » Office B: 125 SF



1310 SE MAYNARD RD  
CARY, NC 27511

# PROPERTY PHOTOS



KHARMIKA ALSTON  
919.645.1431 DIRECT | 919.672.4905 MOBILE  
KALSTON@TRADEMARKPROPERTIES.COM

**CROSSROADS  
ROADS**

INTERSTATE  
**440**

**SOUTH  
HILLS  
MALL**

INTERSTATE  
**40**

**EPIC GAMES**  
HQ CAMPUS

**FENTON**  
MIXED USE DEVELOPMENT

**WRAL  
SOCCER PARK**



WALNUT ST

WALNUT ST

WALNUT ST

SE MAYNARD RD

SE MAYNARD RD

WESTERN BLVD

CARY TOWNE BLVD

INTERSTATE  
**40**

**KHARMIKA ALSTON**  
919.645.1431 DIRECT | 919.672.4905 MOBILE  
KALSTON@TRADEMARKPROPERTIES.COM

LISTING BROKER:

**KHARMIKA ALSTON**

919.645.1431 DIRECT | 919.672.4905 MOBILE  
KALSTON@TRADEMARKPROPERTIES.COM



**TRADEMARK**  
P R O P E R T I E S

**THIS IS OUR TRADEMARK**

THE INFORMATION CONTAINED HEREIN WAS OBTAINED FROM SOURCES BELIEVED RELIABLE; HOWEVER, TRADEMARK PROPERTIES MAKES NO GUARANTEES, WARRANTIES, OR REPRESENTATIONS AS TO THE COMPLETENESS OR ACCURACY THEREOF. THE PRESENTATION OF THIS PROPERTY IS SUBMITTED SUBJECT TO ERRORS, OMISSIONS, CHANGES OF PRICE OR CONDITIONS PRIOR TO SALE OR LEASE, OR WITHDRAWAL WITHOUT NOTICE.