



**TRADEMARK**  
PROPERTIES

**MORDECAI OFFICE SUITES**

**1301 WAKE FOREST ROAD**

**RALEIGH, NC 27604**

**FOR  
LEASE**

**LISTING BROKER:**

**KHARMIKA ALSTON**

**919.645.1431 DIRECT | 919.672.4905 MOBILE  
KALSTON@TRADEMARKPROPERTIES.COM**

**1001 WADE AVENUE SUITE 300, RALEIGH, NC 27605  
TRADEMARKPROPERTIES.COM | 919-782-5552**

**1301 WAKE FOREST ROAD**  
**RALEIGH, NC 27604**

## PROPERTY HIGHLIGHTS

- Vaulted ceilings upstairs
- Wi-Fi included
- Windows in every office
- Pet friendly
- Walking distance to restaurants and retail
- 1.4/1,000 parking ratio, available street parking



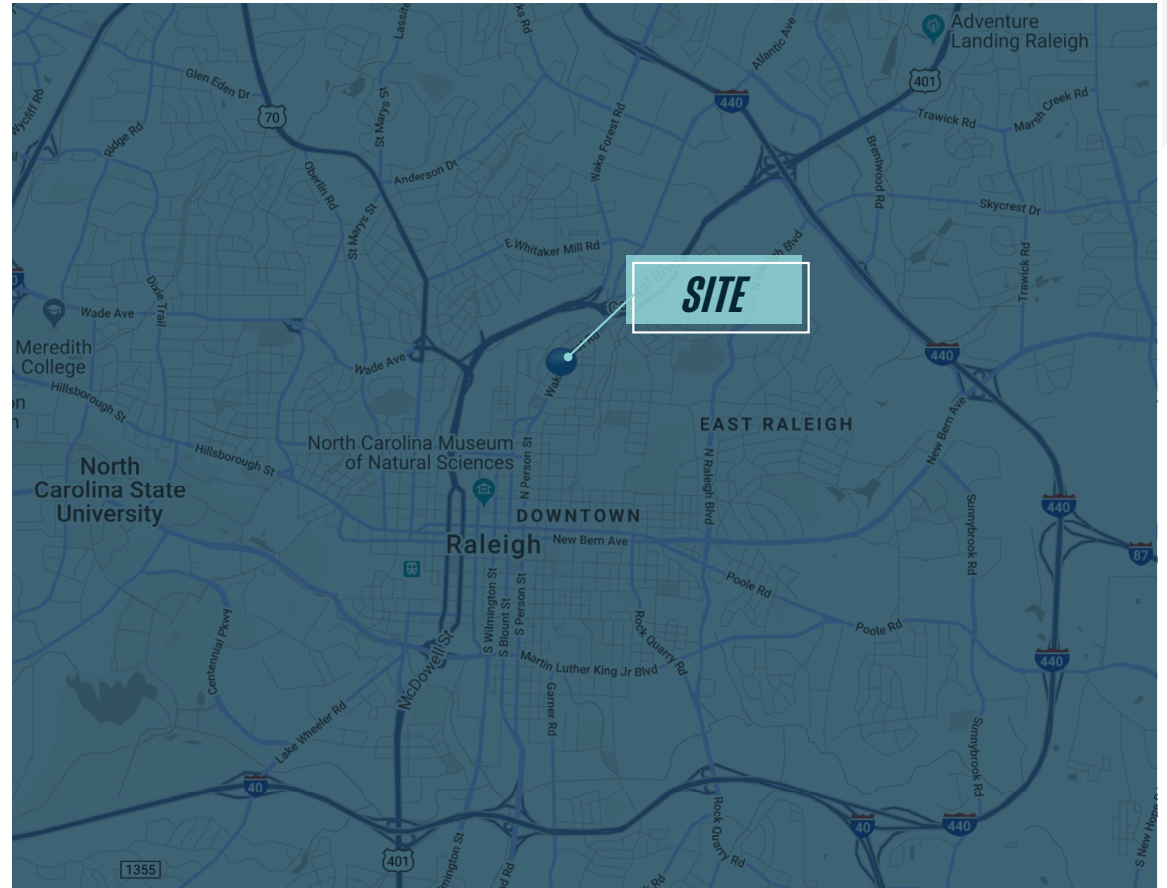
1301 WAKE FOREST ROAD  
RALEIGH, NC 27604

## LOCATION DETAILS

- Situated in Oak City's founding neighborhood, Mordecai, the office suites are in walking distance to Downtown Raleigh
- Near Mordecai Historic Park, Seaboard Station and a variety of retail establishments including Krispy Kreme, The Station, Person Street Bar, and Stanbury

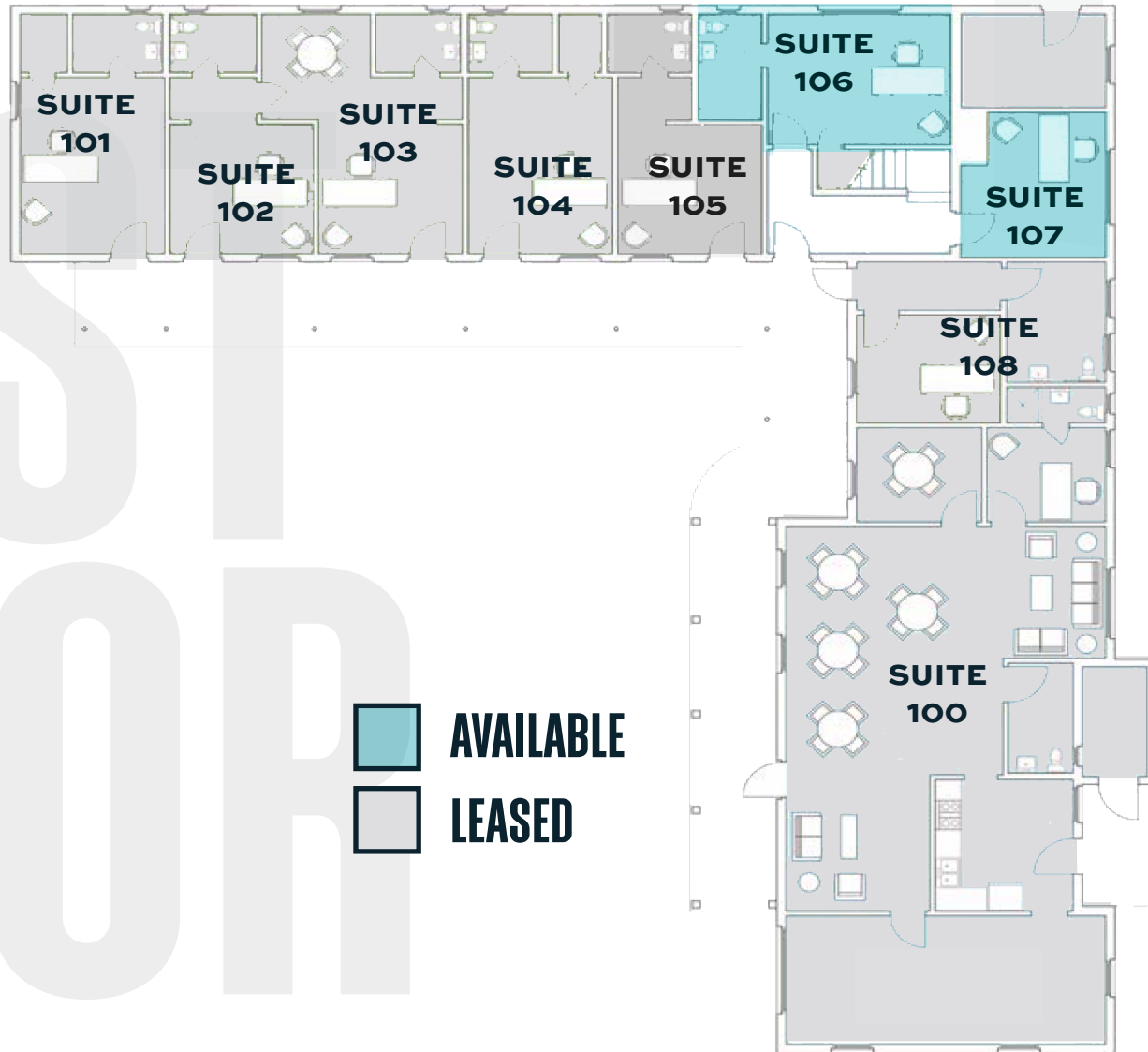
### AVAILABILITY

SUITE	SIZE	MONTHLY RENT
106/107	420 SF	\$1,400



1301 WAKE FOREST ROAD  
RALEIGH, NC 27604

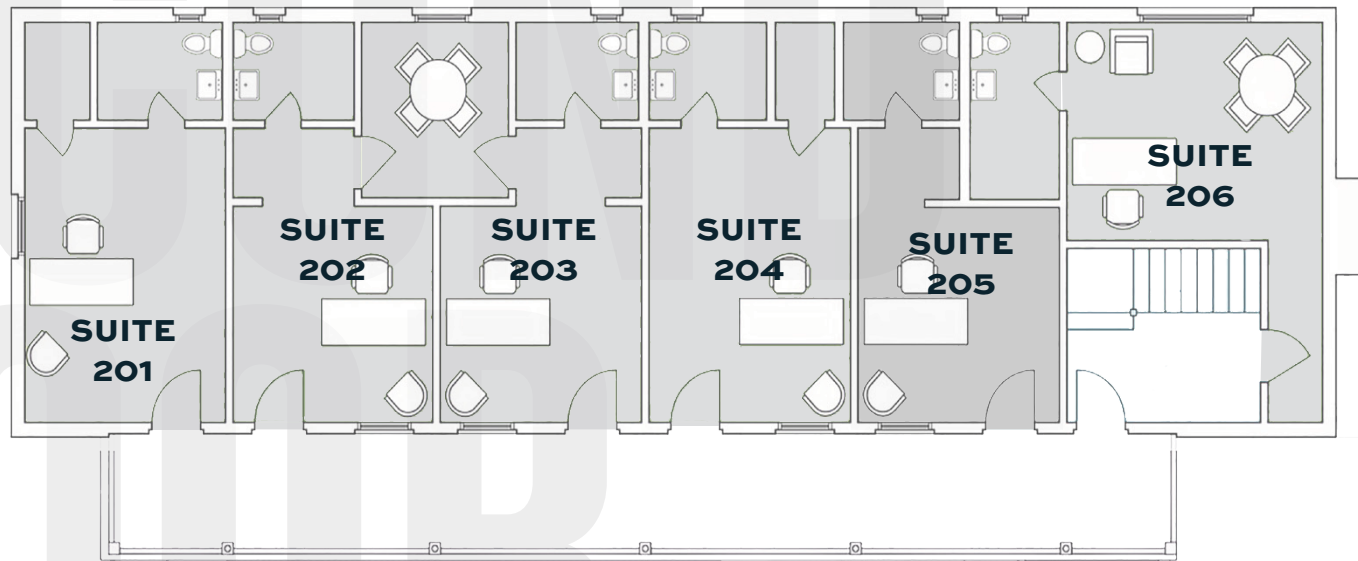
# FIRST FLOOR



 AVAILABLE  
 LEASED

1301 WAKE FOREST ROAD  
RALEIGH, NC 27604

## SECOND FLOOR



 AVAILABLE  
 LEASED

KHARMIKA ALSTON  
919.645.1431 DIRECT | 919.672.4905 MOBILE  
KALSTON@TRADEMARKPROPERTIES.COM

1301 WAKE FOREST ROAD  
RALEIGH, NC 27604

## LOCATION MAP



LISTING BROKER:

**KHARMIKA ALSTON**

919.645.1431 DIRECT | 919.672.4905 MOBILE  
KALSTON@TRADEMARKPROPERTIES.COM



**TRADEMARK**  
PROPERTIES

**THIS IS OUR TRADEMARK**

THE INFORMATION CONTAINED HEREIN WAS OBTAINED FROM SOURCES BELIEVED RELIABLE; HOWEVER, TRADEMARK PROPERTIES MAKES NO GUARANTEES, WARRANTIES, OR REPRESENTATIONS AS TO THE COMPLETENESS OR ACCURACY THEREOF. THE PRESENTATION OF THIS PROPERTY IS SUBMITTED SUBJECT TO ERRORS, OMISSIONS, CHANGES OF PRICE OR CONDITIONS PRIOR TO SALE OR LEASE, OR WITHDRAWAL WITHOUT NOTICE.