



TRADEMARK
PROPERTIES

1155 KILDAIRE FARM RD

CARY, NC 27511

SMALL OFFICE SPACES

**FOR
LEASE**

LISTING BROKER:

SHELLEY BHATIA, CCIM

SR. VICE PRESIDENT

910.273.8474 (M)

SBHATIA@TRADEMARKPROPERTIES.COM



1001 WADE AVENUE SUITE 300, RALEIGH, NC 27605
TRADEMARKPROPERTIES.COM | 919-782-5552

1155 KILDAIRE FARM ROAD
CARY, NC 27511

PROPERTY HIGHLIGHTS

- › Shared office space
- › Bright offices with natural light
- › Modern design
- › Quiet and private setting
- › High-speed internet
- › Large, technologically enabled conference room
- › Easy access to Raleigh, Apex and Holly Springs via US-1 and I-40
- › Located directly off Kildaire Farm Road
- › Down the street from the Shoppes of Kildaire, anchored by Trader Joe's and Staples
- › Convenient access to I-40
- › 15 minutes to RDU International Airport

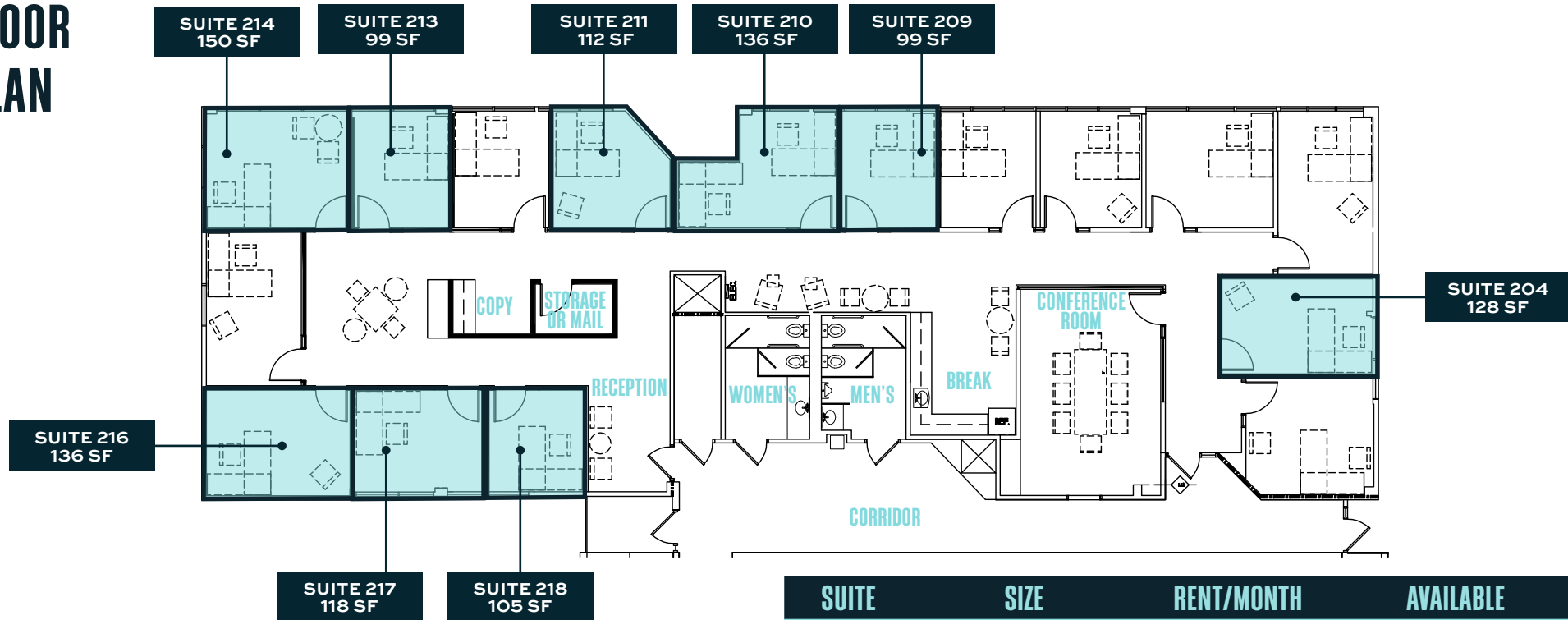


SHELLEY BHATIA, CCIM
SR. VICE PRESIDENT
910.273.8474 (M)

SBHATIA@TRADEMARKPROPERTIES.COM

1155 KILDAIRE FARM ROAD
CARY, NC 27511

FLOOR PLAN



SUITE	SIZE	RENT/MONTH	AVAILABLE
204	128 SF	\$825	Immediately
209	99 SF	\$750	October 2024
210	136 SF	\$850	October 2024
211	112 SF	\$775	Immediately
213	99 SF	\$750	October 2024
214	150 SF	\$900	October 2024
216	136 SF	\$900	30 Day Notice
217	118 SF	\$800	30 Day Notice
218	105 SF	\$750	Immediately

SHELLEY BHATIA, CCIM
SR. VICE PRESIDENT
910.273.8474 (M)

SBHATIA@TRADEMARKPROPERTIES.COM

1155 KILDAIRE FARM ROAD
CARY, NC 27511

RETAIL MAP



SHELLEY BHATIA, CCIM
SR. VICE PRESIDENT
910.273.8474 (M)

SBHATIA@TRADEMARKPROPERTIES.COM

LISTING BROKER:

SHELLEY BHATIA, CCIM

910.273.8474 MOBILE

SBHATIA@TRADEMARKPROPERTIES.COM



TRADEMARK
P R O P E R T I E S

THIS IS OUR TRADEMARK

THE INFORMATION CONTAINED HEREIN WAS OBTAINED FROM SOURCES BELIEVED RELIABLE; HOWEVER, TRADEMARK PROPERTIES MAKES NO GUARANTEES, WARRANTIES, OR REPRESENTATIONS AS TO THE COMPLETENESS OR ACCURACY THEREOF. THE PRESENTATION OF THIS PROPERTY IS SUBMITTED SUBJECT TO ERRORS, OMISSIONS, CHANGES OF PRICE OR CONDITIONS PRIOR TO SALE OR LEASE, OR WITHDRAWAL WITHOUT NOTICE.