



2880 SLATER ROAD

MORRISVILLE, NC 27560

**FOR
SUBLEASE**

**6,701 SF
OFFICE
SPACE**

LISTING BROKER:

FRED DICKENS

919.227.5508 DIRECT | 919.673.4775 MOBILE

FDICKENS@TRADEMARKPROPERTIES.COM



**TRADEMARK
PROPERTIES**

**1001 WADE AVENUE SUITE 300, RALEIGH, NC 27605
TRADEMARKPROPERTIES.COM | 919-782-5552**

**2880 SLATER ROAD
MORRISVILLE, NC 27560**



PROPERTY HIGHLIGHTS



- » Two-story brick and glass building with marble foyer/lobby
- » Free adjacent surface parking
- » Suite 200: 6,701 SF - Now
- » Located just off I-40 and Airport Boulevard on Slater Road
- » Easy access to I-40 and I-540

**LEASE RATE:
CALL BROKER**

- » Surrounded by numerous restaurants and hotels
- » 10 minutes away from RTP, Brier Creek, Lake Crabtree County Park and William B. Umstead State Park

FRED DICKENS
919.227.5508 DIRECT | 919.673.4775 MOBILE
FDICKENS@TRADEMARKPROPERTIES.COM

2880 SLATER ROAD
MORRISVILLE, NC 27560



SECOND FLOOR COMMON AREA

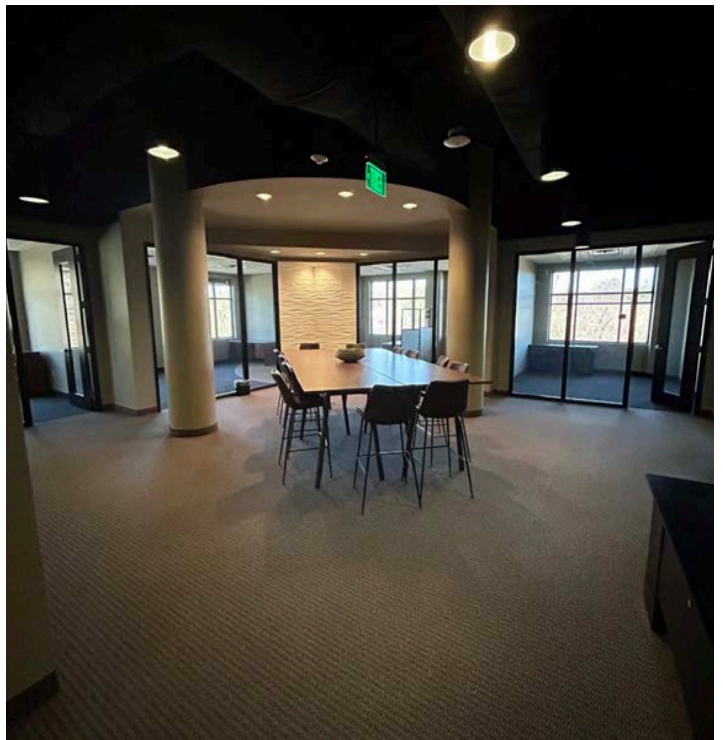


FRED DICKENS
919.227.5508 DIRECT | 919.673.4775 MOBILE
FDICKENS@TRADEMARKPROPERTIES.COM

**2880 SLATER ROAD
MORRISVILLE, NC 27560**



SUITE 200



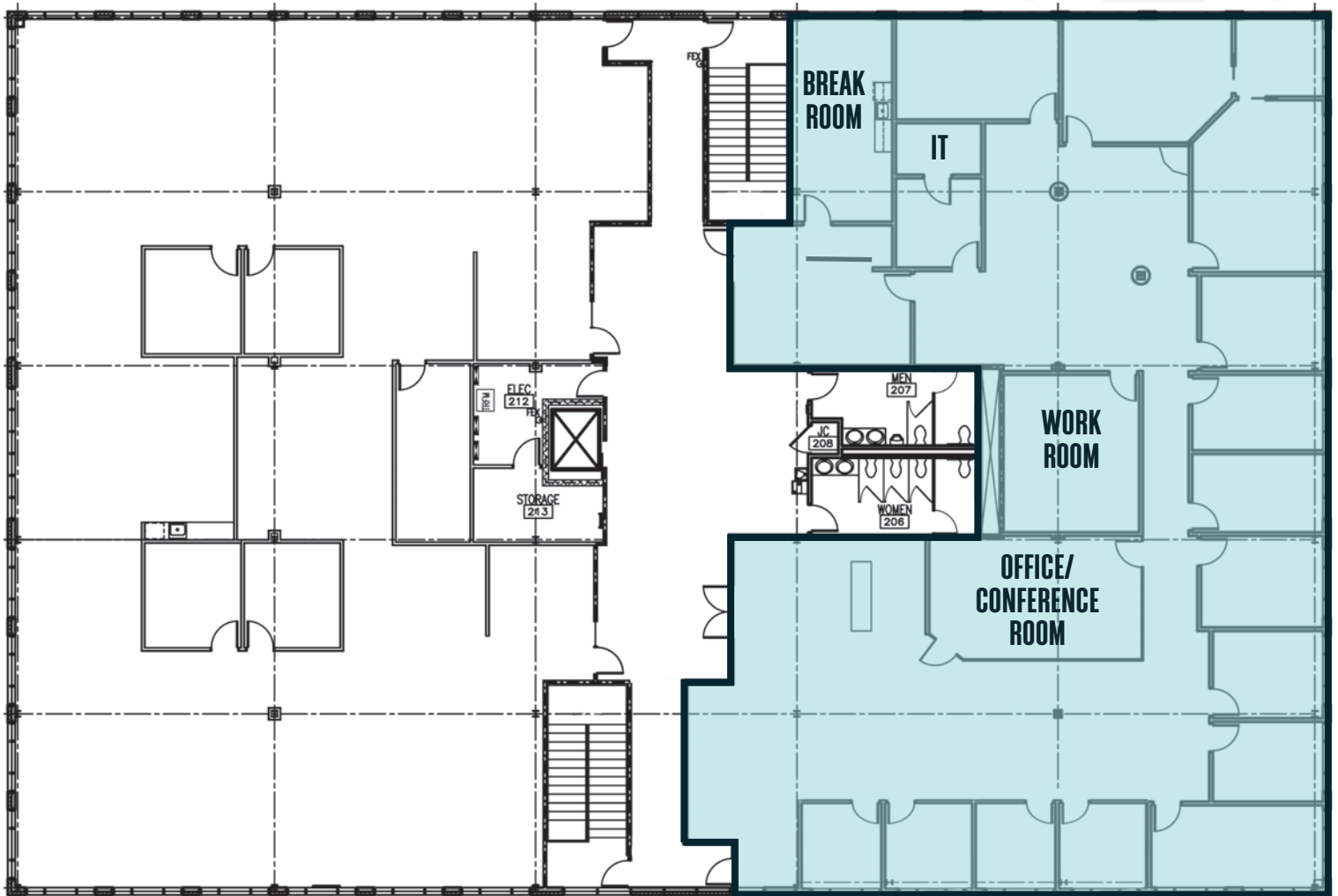
FRED DICKENS
919.227.5508 DIRECT | 919.673.4775 MOBILE
FDICKENS@TRADEMARKPROPERTIES.COM

2880 SLATER ROAD
MORRISVILLE, NC 27560



FLOOR PLAN

- » Suite 200
- » 6,701 SF

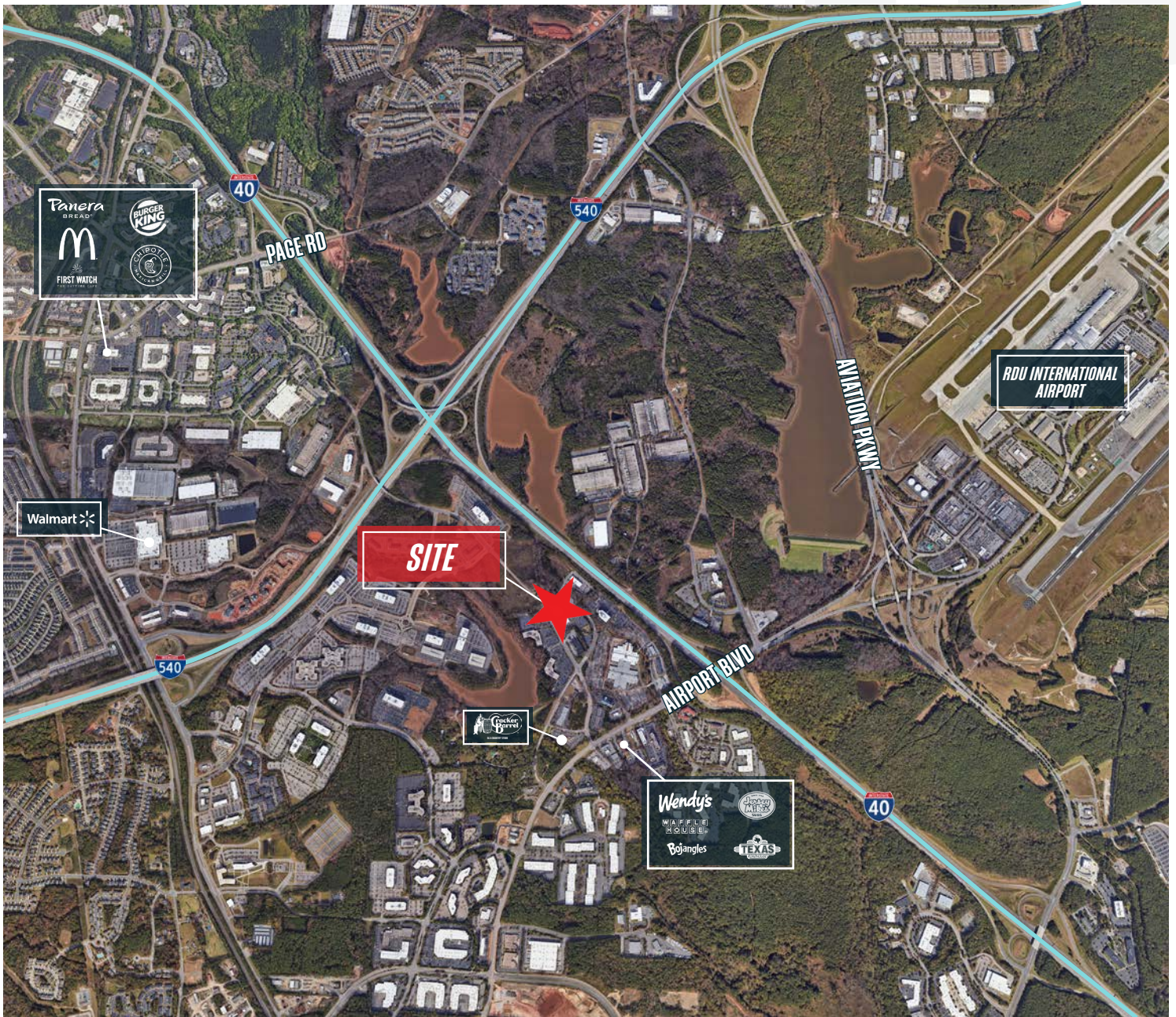


FRED DICKENS
919.227.5508 DIRECT | 919.673.4775 MOBILE
FDICKENS@TRADEMARKPROPERTIES.COM

2880 SLATER ROAD
MORRISVILLE, NC 27560



AERIAL MAP



FRED DICKENS
919.227.5508 DIRECT | 919.673.4775 MOBILE
FDICKENS@TRADEMARKPROPERTIES.COM

LISTING BROKER:

FRED DICKENS

919.227.5508 DIRECT | 919.673.4775 MOBILE
FDICKENS@TRADEMARKPROPERTIES.COM



TRADEMARK
PROPERTIES

THIS IS OUR TRADEMARK

THE INFORMATION CONTAINED HEREIN WAS OBTAINED FROM SOURCES BELIEVED RELIABLE; HOWEVER, TRADEMARK PROPERTIES MAKES NO GUARANTEES, WARRANTIES, OR REPRESENTATIONS AS TO THE COMPLETENESS OR ACCURACY THEREOF. THE PRESENTATION OF THIS PROPERTY IS SUBMITTED SUBJECT TO ERRORS, OMISSIONS, CHANGES OF PRICE OR CONDITIONS PRIOR TO SALE OR LEASE, OR WITHDRAWAL WITHOUT NOTICE.