



TRADEMARK
PROPERTIES

1310 SE MAYNARD RD

CARY, NC 27511

**EXECUTIVE
OFFICES
FOR
LEASE**

LISTING BROKER:

KHARMIKA ALSTON

919.645.1431 (O) | 919.672.4905 (M)

KALSTON@TRADEMARKPROPERTIES.COM



1001 WADE AVENUE SUITE 300, RALEIGH, NC 27605
TRADEMARKPROPERTIES.COM | 919-782-5552

**1310 SE MAYNARD RD
CARY, NC 27511**

PROPERTY HIGHLIGHTS

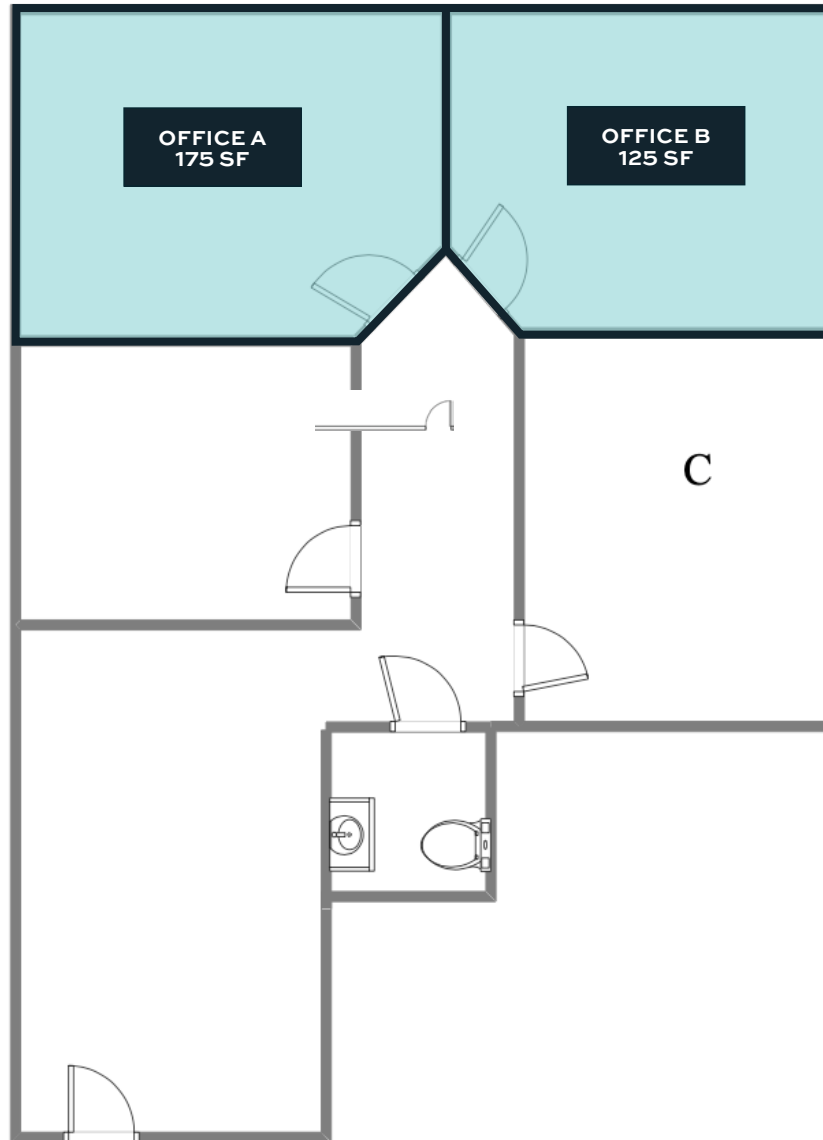
- » Fully furnished executive offices for lease
 - » Office A: 175 SF
 - » Office B: 125 SF
- » Two offices with the following provided:
 - » High Speed Internet 500+mbps
 - » Electricity
 - » Water
 - » Kitchenette Area
 - » Security System
- » Strategically located within a mile of Fenton, a thriving mixed-use development, Epic Games Headquarters, and WRAL Soccer Park, home to NCFC and the Carolina Courage
- » Just three miles from Crossroads Plaza and South Hills Mall, offering convenient access to premier shopping and dining
- » Easy Access to I40 and I440
- » Ten Miles from RDU International Airport
- » Only 12 miles away from Research Triangle Park, providing easy connectivity to one of the region's prominent business hubs



1310 SE MAYNARD RD
CARY, NC 27511

FLOOR PLAN

- » Office A: 175 SF
- » Office B: 125 SF



1310 SE MAYNARD RD
CARY, NC 27511

PROPERTY PHOTOS



KHARMIKA ALSTON
919.645.1431 DIRECT | 919.672.4905 MOBILE
KALSTON@TRADEMARKPROPERTIES.COM

**CROSSROADS
ROADS**

INTERSTATE
440

**SOUTH
HILLS MALL**

INTERSTATE
40

WALNUT ST

WALNUT ST

WALNUT ST

EPIC GAMES
HQ CAMPUS

SE MAYNARD RD

FENTON
MIXED USE DEVELOPMENT

**WRAL
SOCCER PARK**

WESTERN BLVD

INTERSTATE
40

CARY TOWNE BLVD

SE MAYNARD RD

KHARMIKA ALSTON
919.645.1431 DIRECT | 919.672.4905 MOBILE
KALSTON@TRADEMARKPROPERTIES.COM

LISTING BROKER:

KHARMIKA ALSTON

919.645.1431 DIRECT | 919.672.4905 MOBILE
KALSTON@TRADEMARKPROPERTIES.COM



TRADEMARK
PROPERTIES

THIS IS OUR TRADEMARK

THE INFORMATION CONTAINED HEREIN WAS OBTAINED FROM SOURCES BELIEVED RELIABLE; HOWEVER, TRADEMARK PROPERTIES MAKES NO GUARANTEES, WARRANTIES, OR REPRESENTATIONS AS TO THE COMPLETENESS OR ACCURACY THEREOF. THE PRESENTATION OF THIS PROPERTY IS SUBMITTED SUBJECT TO ERRORS, OMISSIONS, CHANGES OF PRICE OR CONDITIONS PRIOR TO SALE OR LEASE, OR WITHDRAWAL WITHOUT NOTICE.