

FOR LEASE

LISTING BROKER:

JIM HARRIS, CCIM

919.782.5552 (O) | 919.649.6114 (M)

JHARRIS@TRADEMARKPROPERTIES.COM

CAMPUS NORTH

805 - 811 SPRING FOREST RD | RALEIGH, NC 27609

BUILDING 807 | SUITE 1600 | 1,545 SF

BUILDING 809 | SUITE 100 | 2,192 SF

**805 - 811 SPRING FOREST ROAD
RALEIGH, NC 27609**

PROPERTY HIGHLIGHTS

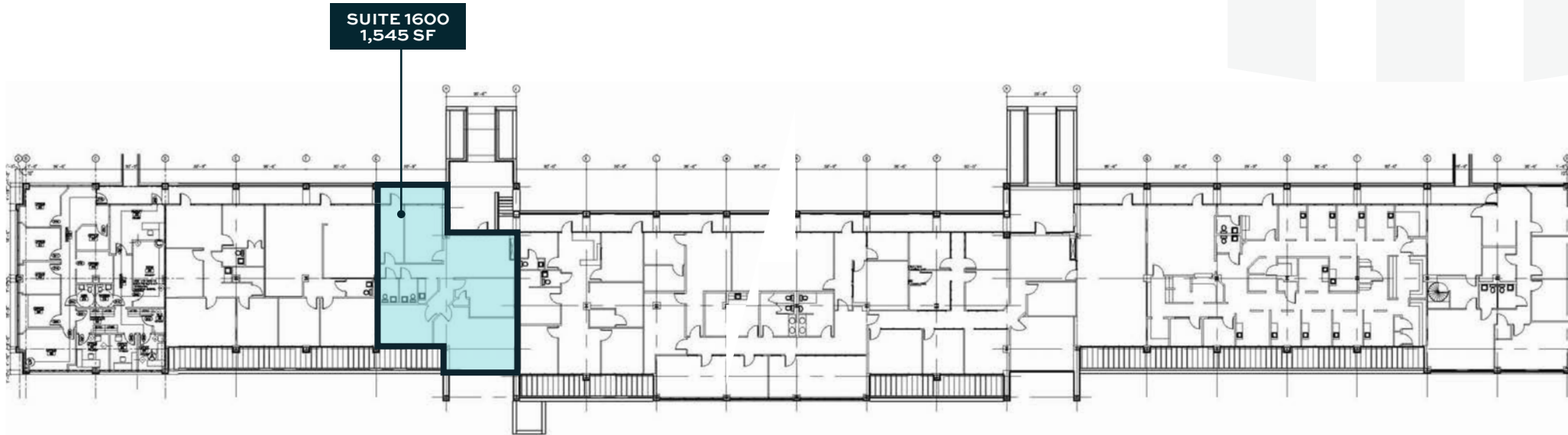
- › 64,430 SF, four building, North Raleigh office park
- › Building 807:
 - › Suite 1600
 - › 1,545 SF
- › Building 809
 - › Suite 100
 - › 2,192 SF
- › Adjacent to the corner of Spring Forest Road (26,500 AADT) and Falls of Neuse Road (35,400 AADT)
- › Located along the major retail corridor of Falls of Neuse Road
- › 4:1,000 SF parking ratio

BUILDING	SUITE	SF	LEASE RATE	SERVICE TYPE
807	1600	1,545	\$23.00/SF	Full Service
809	100	2,192	\$24.00/SF	Full Service



805 - 811 SPRING FOREST ROAD
RALEIGH, NC 27609

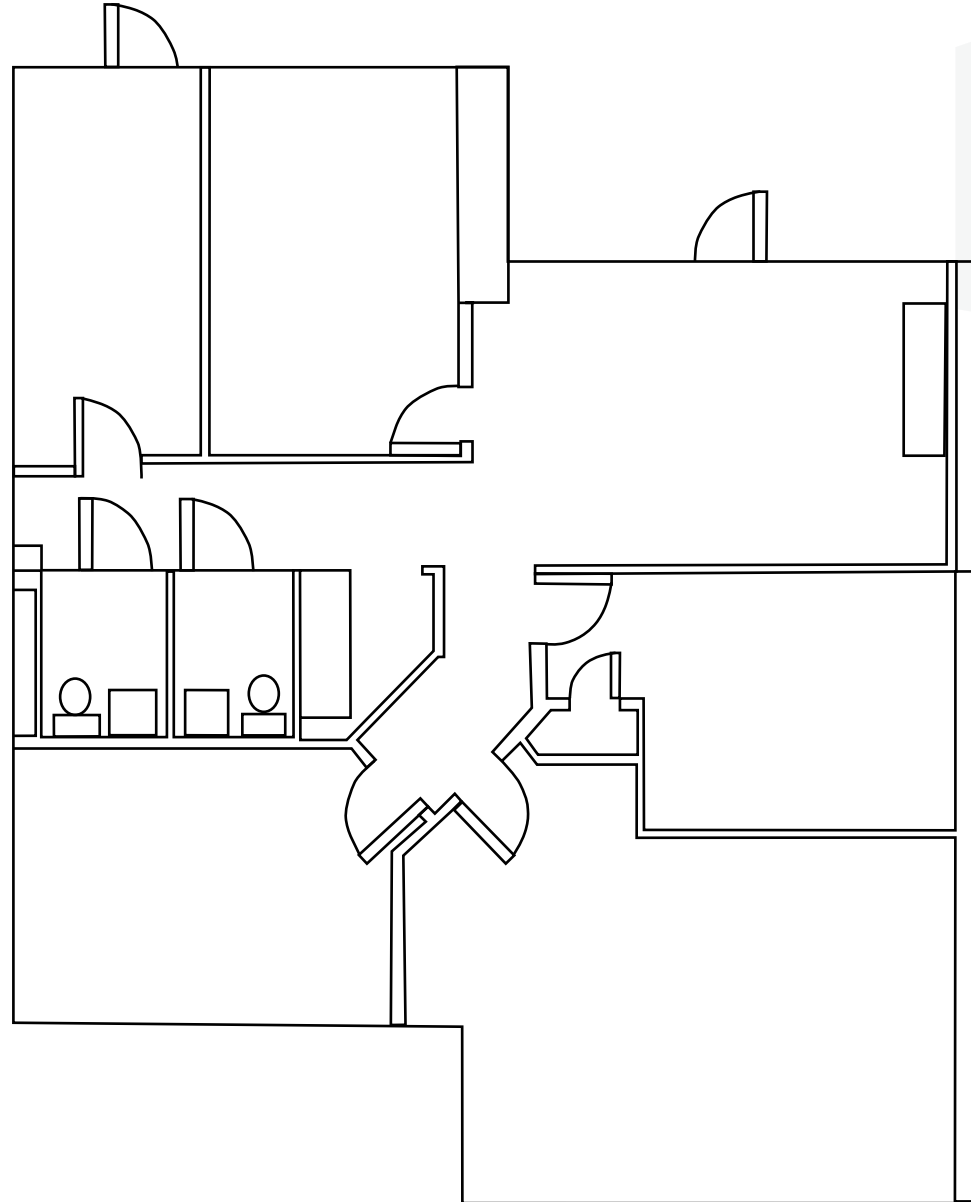
BUILDING 807 FLOOR PLAN



JIM HARRIS, CCIM
919.782.5552 (D) | 919.649.6114 (M)
JHARRIS@TRADEMARKPROPERTIES.COM

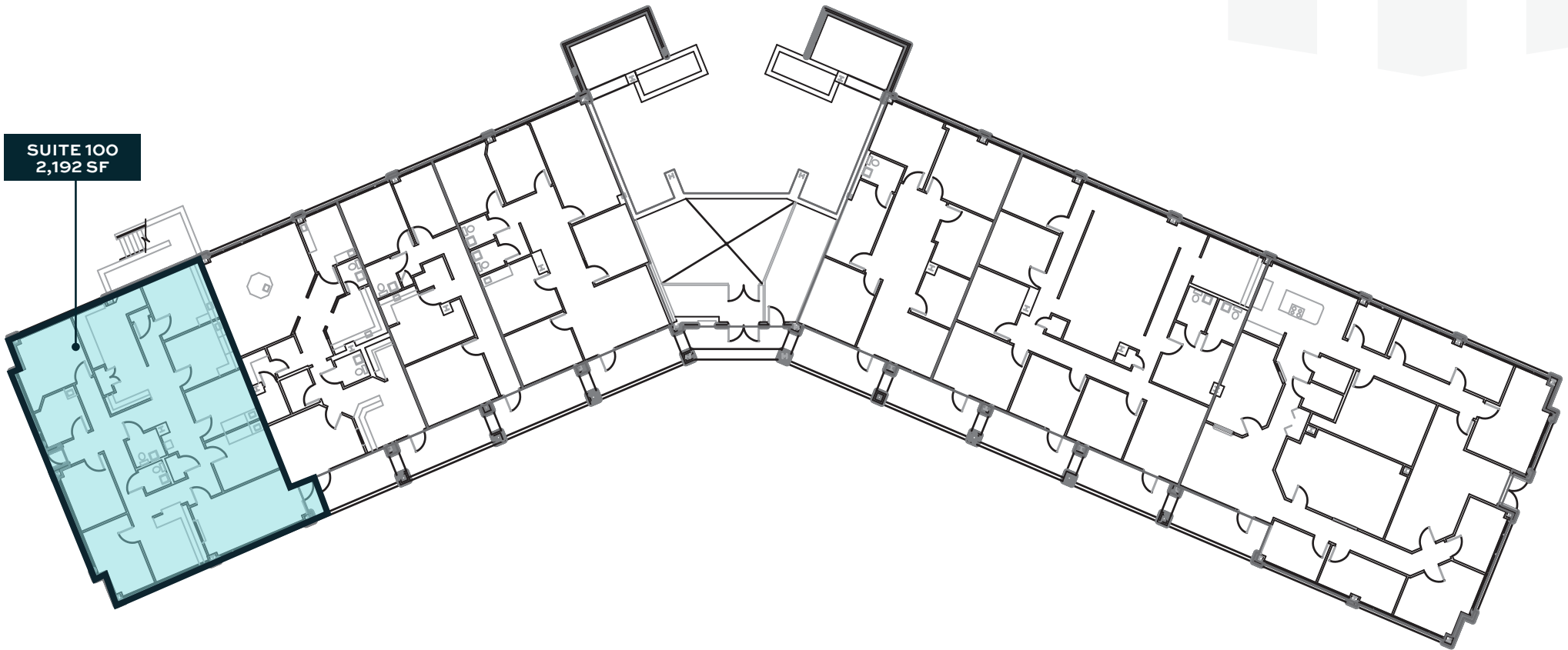
805 - 811 SPRING FOREST ROAD
RALEIGH, NC 27609

BUILDING 807
SUITE 1600: 1,545 SF



805 - 811 SPRING FOREST ROAD
RALEIGH, NC 27609

BUILDING 809 FLOOR PLAN

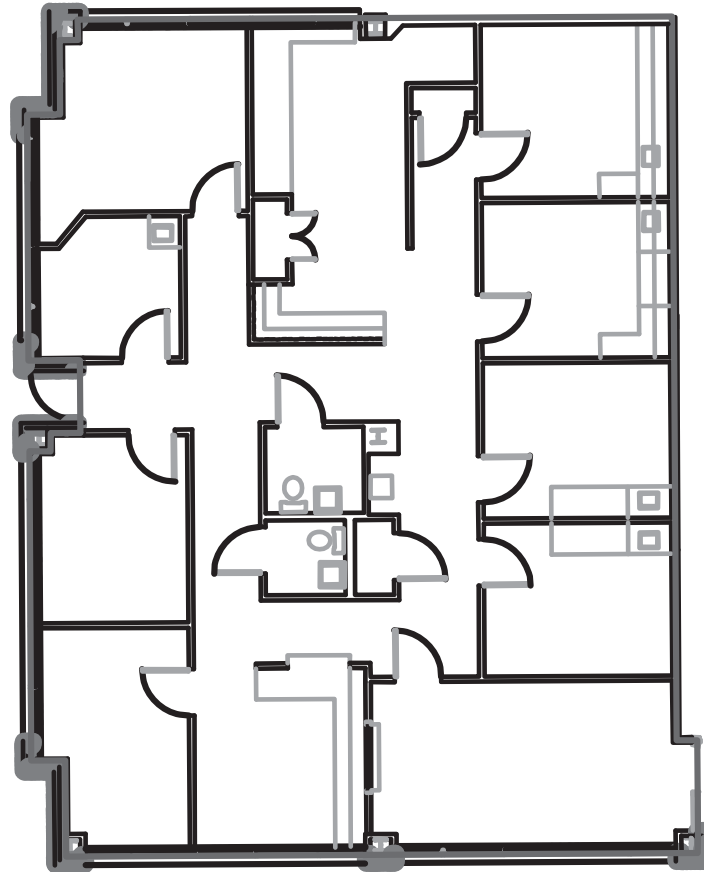


SUITE 100
2,192 SF

JIM HARRIS, CCIM
919.782.5552 (D) | 919.649.6114 (M)
JHARRIS@TRADEMARKPROPERTIES.COM

805 - 811 SPRING FOREST ROAD
RALEIGH, NC 27609

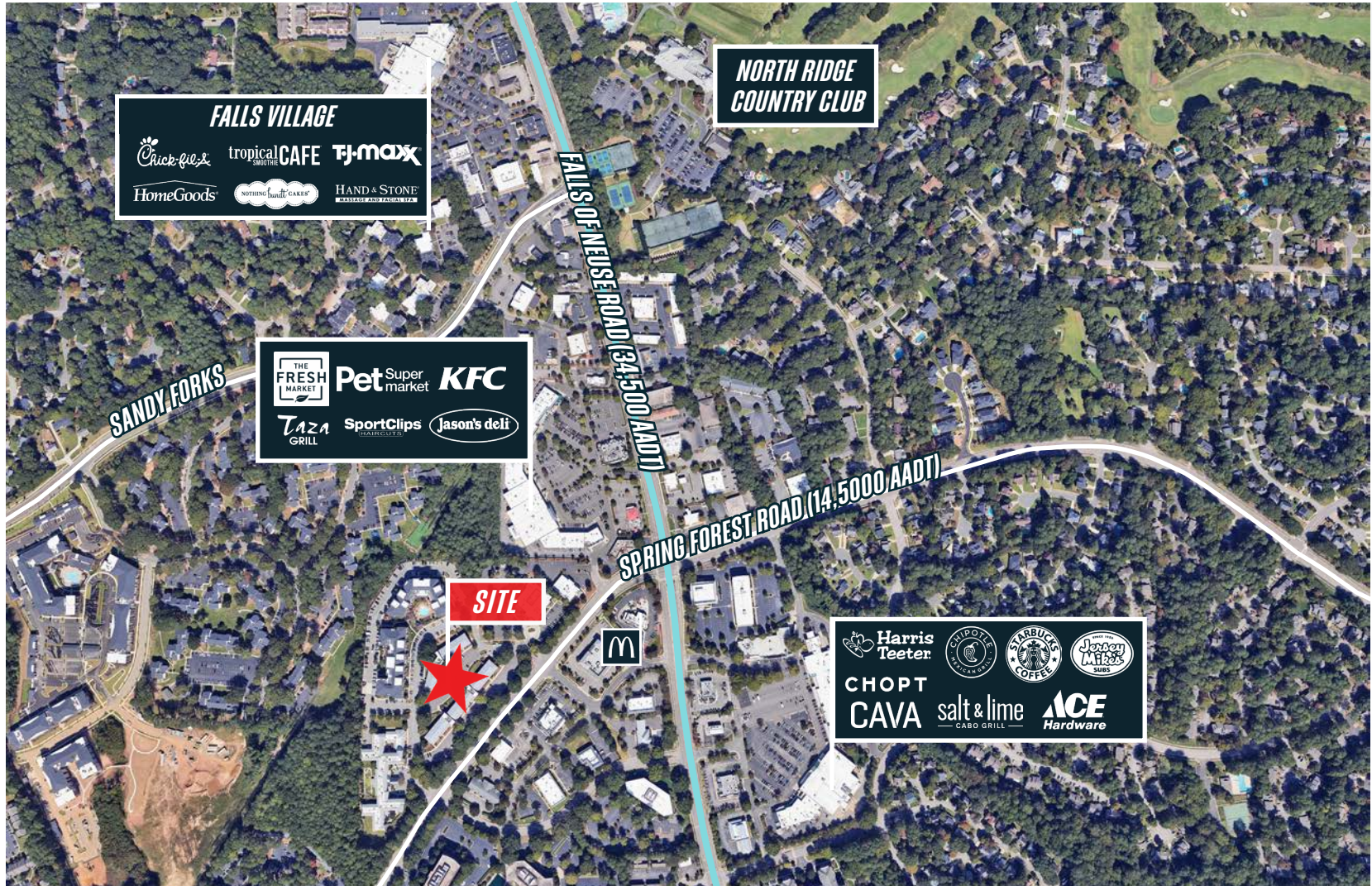
BUILDING 809
SUITE 100: 2,192 SF



JIM HARRIS, CCIM
919.782.5552 (D) | 919.649.6114 (M)
JHARRIS@TRADEMARKPROPERTIES.COM

805 - 811 SPRING FOREST ROAD
RALEIGH, NC 27609

RETAIL MAP



LISTING BROKER:

JIM HARRIS, CCIM

919.782.5552 DIRECT | 919.649.6114 MOBILE
JHARRIS@TRADEMARKPROPERTIES.COM



THIS IS OUR TRADEMARK

THE INFORMATION CONTAINED HEREIN WAS OBTAINED FROM SOURCES BELIEVED RELIABLE; HOWEVER, TRADEMARK PROPERTIES MAKES NO GUARANTEES, WARRANTIES, OR REPRESENTATIONS AS TO THE COMPLETENESS OR ACCURACY THEREOF. THE PRESENTATION OF THIS PROPERTY IS SUBMITTED SUBJECT TO ERRORS, OMISSIONS, CHANGES OF PRICE OR CONDITIONS PRIOR TO SALE OR LEASE, OR WITHDRAWAL WITHOUT NOTICE.