



TRADEMARK
PROPERTIES

1155 KILDAIRE FARM RD

CARY, NC 27511

EXECUTIVE SUITES

**FOR
LEASE**

LISTING BROKER:

SHELLEY BHATIA, CCIM

SR. VICE PRESIDENT

919.645.1421 (O) | 910.273.8474 (M)

SBHATIA@TRADEMARKPROPERTIES.COM



1001 WADE AVENUE SUITE 300, RALEIGH, NC 27605
TRADEMARKPROPERTIES.COM | 919-782-5552

**1155 KILDAIRE FARM ROAD
CARY, NC 27511**

PROPERTY HIGHLIGHTS

- › **Shared office space**
- › **Bright offices with natural light**
- › **Modern design**
- › **Quiet and private setting**
- › **High-speed internet**
- › **Large, technologically enabled conference room**
- › **Easy access to Raleigh, Apex and Holly Springs via US-1 and I-40**
- › **Located directly off Kildaire Farm Road**
- › **Down the street from the Shoppes of Kildaire, anchored by Trader Joe's and Staples**
- › **Convenient access to I-40**
- › **15 minutes to RDU International Airport**



1155 KILDAIRE FARM ROAD
CARY, NC 27511

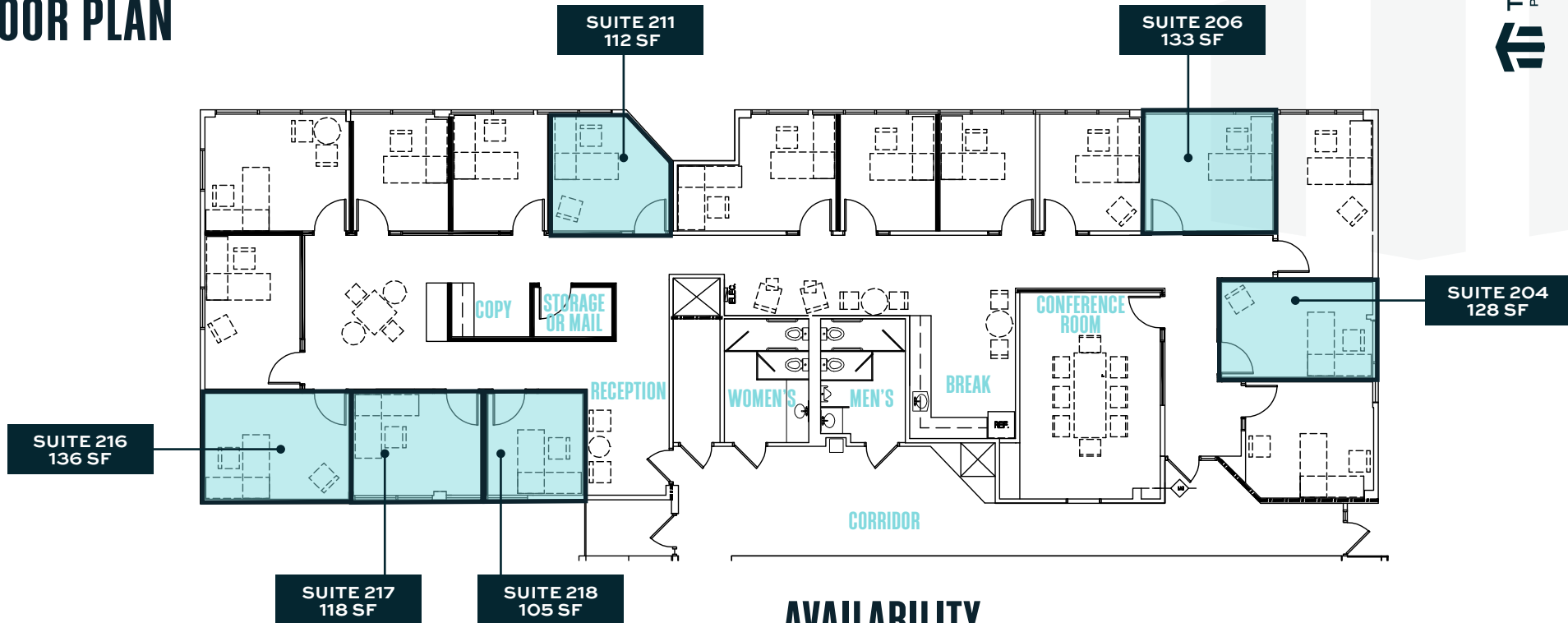
PROPERTY PHOTOS



SHELLEY BHATIA, CCIM
SR. VICE PRESIDENT
919.645.1421 (D) | 910.273.8474 (M)
SBHATIA@TRADEMARKPROPERTIES.COM

1155 KILDAIRE FARM ROAD
CARY, NC 27511

FLOOR PLAN



AVAILABILITY

SUITE	SIZE	RENT/MONTH	AVAILABLE
204	128 SF	\$825	Immediately
206	133 SF	\$800	Immediately
211	112 SF	\$750	Immediately
216	136 SF	\$900	Immediately
217	118 SF	\$800	Immediately
218	105 SF	\$775	Immediately

SHELLEY BHATIA, CCIM
SR. VICE PRESIDENT
919.645.1421 (D) | 910.273.8474 (M)
SBHATIA@TRADEMARKPROPERTIES.COM

1155 KILDAIRE FARM ROAD
CARY, NC 27511

RETAIL MAP



SHELLEY BHATIA, CCIM
SR. VICE PRESIDENT
919.645.1421 (D) | 910.273.8474 (M)
SBHATIA@TRADEMARKPROPERTIES.COM

LISTING BROKER:

SHELLEY BHATIA, CCIM

919.645.1421 DIRECT | 910.273.8474 MOBILE
SBHATIA@TRADEMARKPROPERTIES.COM



THIS IS OUR TRADEMARK

THE INFORMATION CONTAINED HEREIN WAS OBTAINED FROM SOURCES BELIEVED RELIABLE; HOWEVER, TRADEMARK PROPERTIES MAKES NO GUARANTEES, WARRANTIES, OR REPRESENTATIONS AS TO THE COMPLETENESS OR ACCURACY THEREOF. THE PRESENTATION OF THIS PROPERTY IS SUBMITTED SUBJECT TO ERRORS, OMISSIONS, CHANGES OF PRICE OR CONDITIONS PRIOR TO SALE OR LEASE, OR WITHDRAWAL WITHOUT NOTICE.