



**FOR  
LEASE**

**PATTERSON PLACE**

**3616 WITHERSPOON BLVD | DURHAM, NC 27707**

**LISTING BROKERS:**

**BRIAN GRABOWSKI**  
919.227.5698 (O) | 919.349.3569 (M)  
BGRABOWSKI@TRADEMARKPROPERTIES.COM

**SHELLEY BHATIA, CCIM**  
919.645.1421 (O) | 910.273.8474 (M)  
SBHATIA@TRADEMARKPROPERTIES.COM

**DURHAM POWER CENTER  
ANCHOR SPACE &  
SMALL SHOPS AVAILABLE**



**PATTERSON PLACE**  
**DURHAM, NC 27707**

## PROPERTY HIGHLIGHTS

- 160,942 SF retail center just off I-501
- Very close to Duke, UNC, and RTP with easy access to I-40
- Anchored by Bed, Bath and Beyond, Designer Shoe Warehouse, PetSmart, Total Wine, Home Depot and Kohl's
- Property is surrounded by office, medical and residential
- Multiple suites available and ample onsite parking

## CURRENT ANCHORS

**BIG  
LOTS!**

**BED BATH &  
BEYOND**



**Total Wine**  
& MORE

**DSW**  
DESIGNER SHOE WAREHOUSE

**PETSMART**

**KOHL'S**



**BRIAN GRABOWSKI**  
919.227.5698 DIRECT | 919.349.3569 MOBILE  
BGRABOWSKI@TRADEMARKPROPERTIES.COM

**SHELLEY BHATIA, CCIM**  
919.645.1421 DIRECT | 910.273.8474 MOBILE  
SBHATIA@TRADEMARKPROPERTIES.COM



**PATTERSON PLACE  
DURHAM, NC 27707**



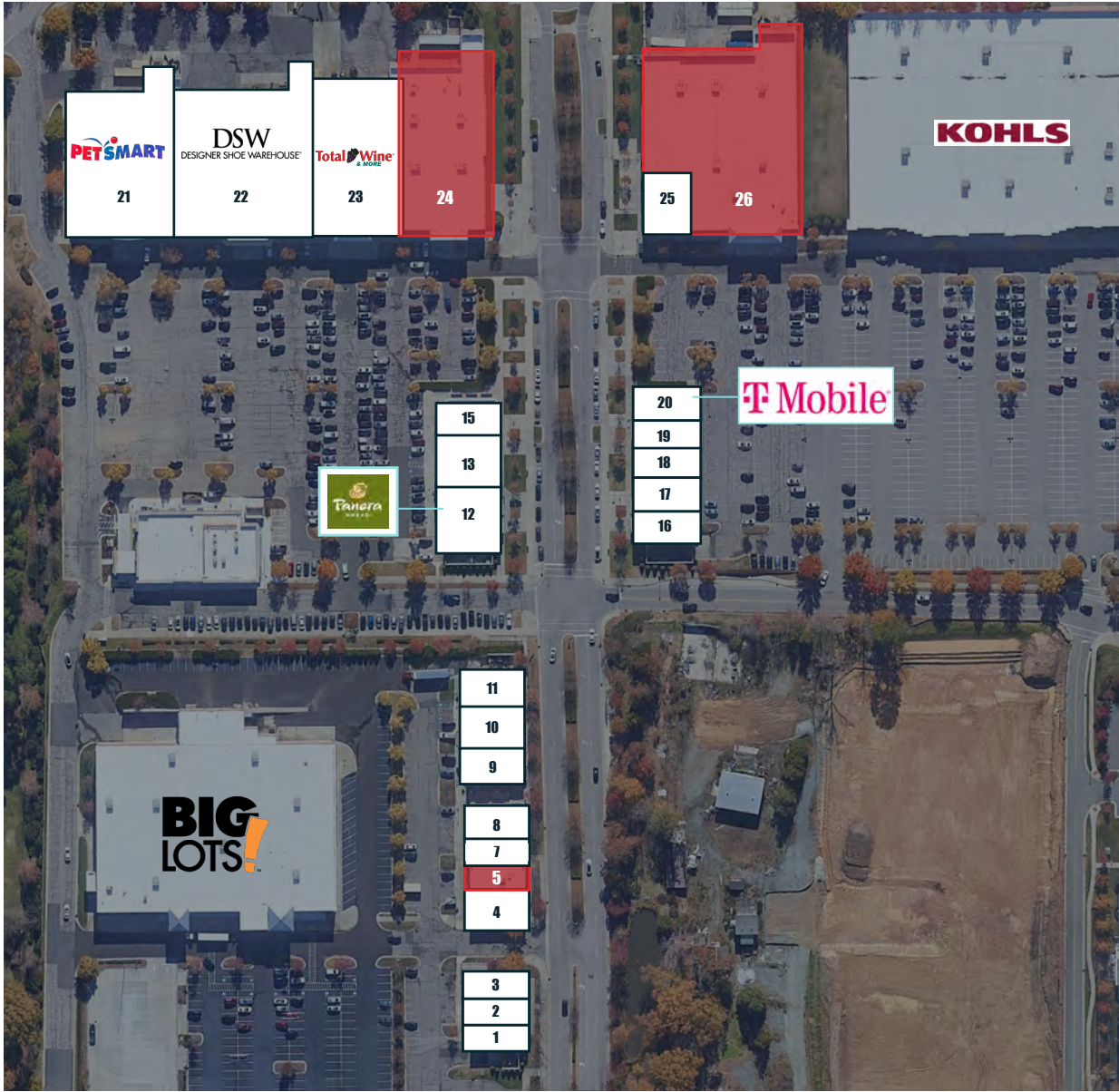
	TENANT	SF
1	Healing Remedies	1,770
2	One Main Financial	1,625
3	Bella Napoli Italian	1,842
4	F45 Training	2,503
5	<b>AVAILABLE</b>	<b>1,378</b>
7	Vape Shop	1,307
8	Peony Asian Bistro	2,950
9	Lavish Beauty Lounge	2,026
10	Augmentality	2,375
11	Salon Centric	3,260
12	Panera Bread	4,593
13	Nails & Spa	2,618
15	Music & Arts Center	2,621
16	GOLFTECH	3,342
17	Casa Bella Home Staging and Styling	1,772
18	Linden's Danceware	2,899
19	Bull City Bakery	1,543
20	T-Mobile	1,383
21	PetSmart	19,107
22	DSW	25,119
23	Total Wine & More	15,000
24	<b>AVAILABLE</b>	<b>21,315</b>
25	Sherwin Williams	3,655
26	<b>AVAILABLE</b>	<b>33,839</b>

**BRIAN GRABOWSKI**  
919.227.5698 DIRECT | 919.349.3569 MOBILE  
BGRABOWSKI@TRADEMARKPROPERTIES.COM

**SHELLEY BHATIA, CCIM**  
919.645.1421 DIRECT | 910.273.8474 MOBILE  
SBHATIA@TRADEMARKPROPERTIES.COM



**PATTERSON PLACE  
DURHAM, NC 27707**



**AVAILABILITY**

SUITE	SF	RATE		FORMER USE
5	1,378	\$26/SF	TICAM \$6.20/SF	501 Protein Smoothie Shop
24	21,315	\$15/SF		Furniture Bell
26	33,839	\$15/SF		Bed Bath & Beyond

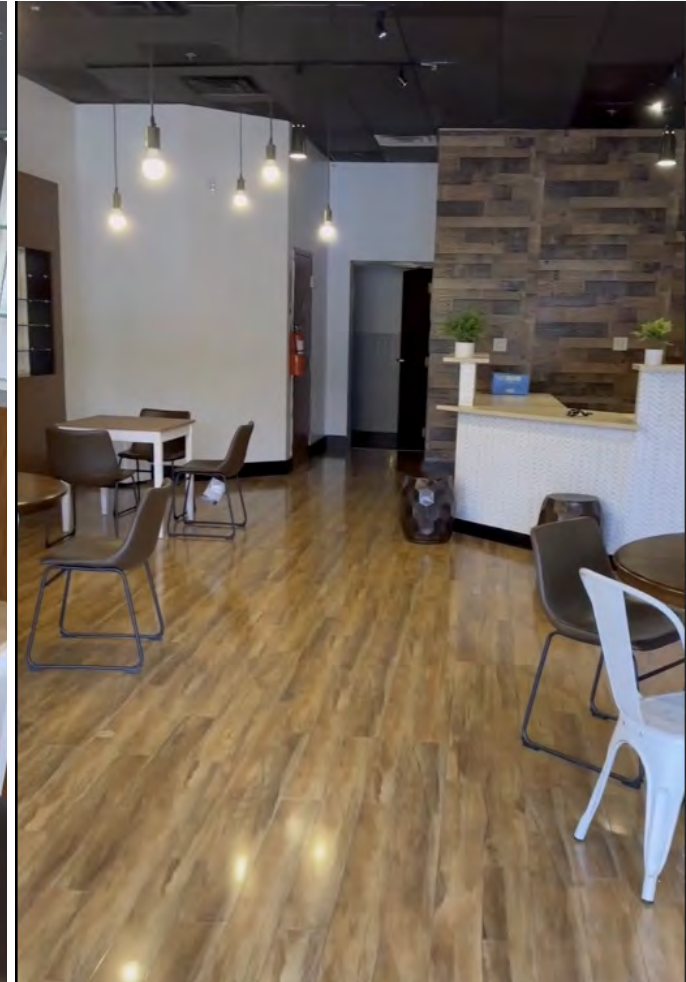
- Suite 5 available Spring 2024
- Suite 24 available TBD Month to Month
- Suite 26 available now

**BRIAN GRABOWSKI**  
919.227.5698 DIRECT | 919.349.3569 MOBILE  
BGRABOWSKI@TRADEMARKPROPERTIES.COM

**SHELLEY BHATIA, CCIM**  
919.645.1421 DIRECT | 910.273.8474 MOBILE  
SBHATIA@TRADEMARKPROPERTIES.COM

**PATTERSON PLACE  
DURHAM, NC 27707**

## **SUITE 5**



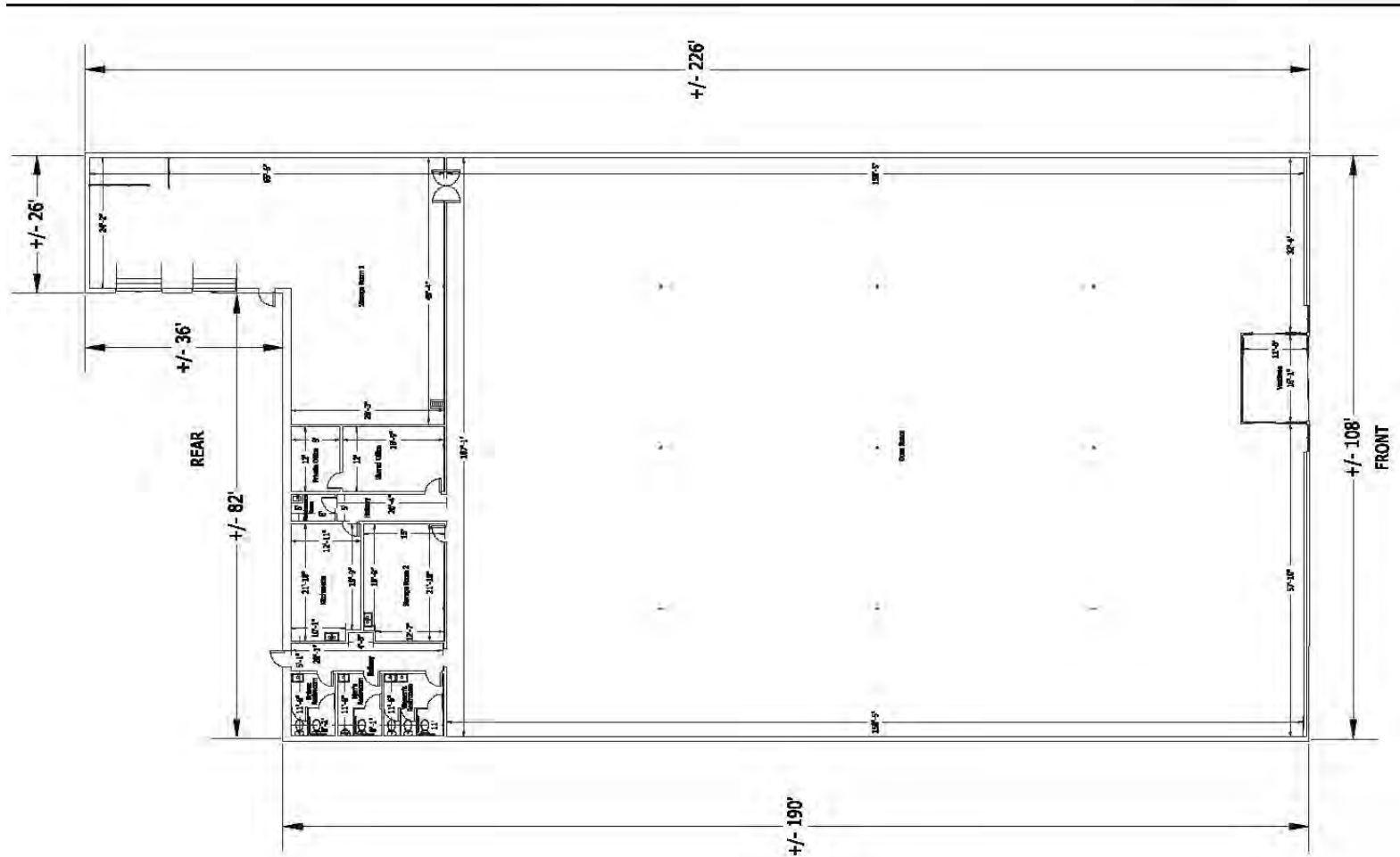
**BRIAN GRABOWSKI**  
919.227.5698 DIRECT | 919.349.3569 MOBILE  
BGRABOWSKI@TRADEMARKPROPERTIES.COM

**SHELLEY BHATIA, CCIM**  
919.645.1421 DIRECT | 910.273.8474 MOBILE  
SBHATIA@TRADEMARKPROPERTIES.COM



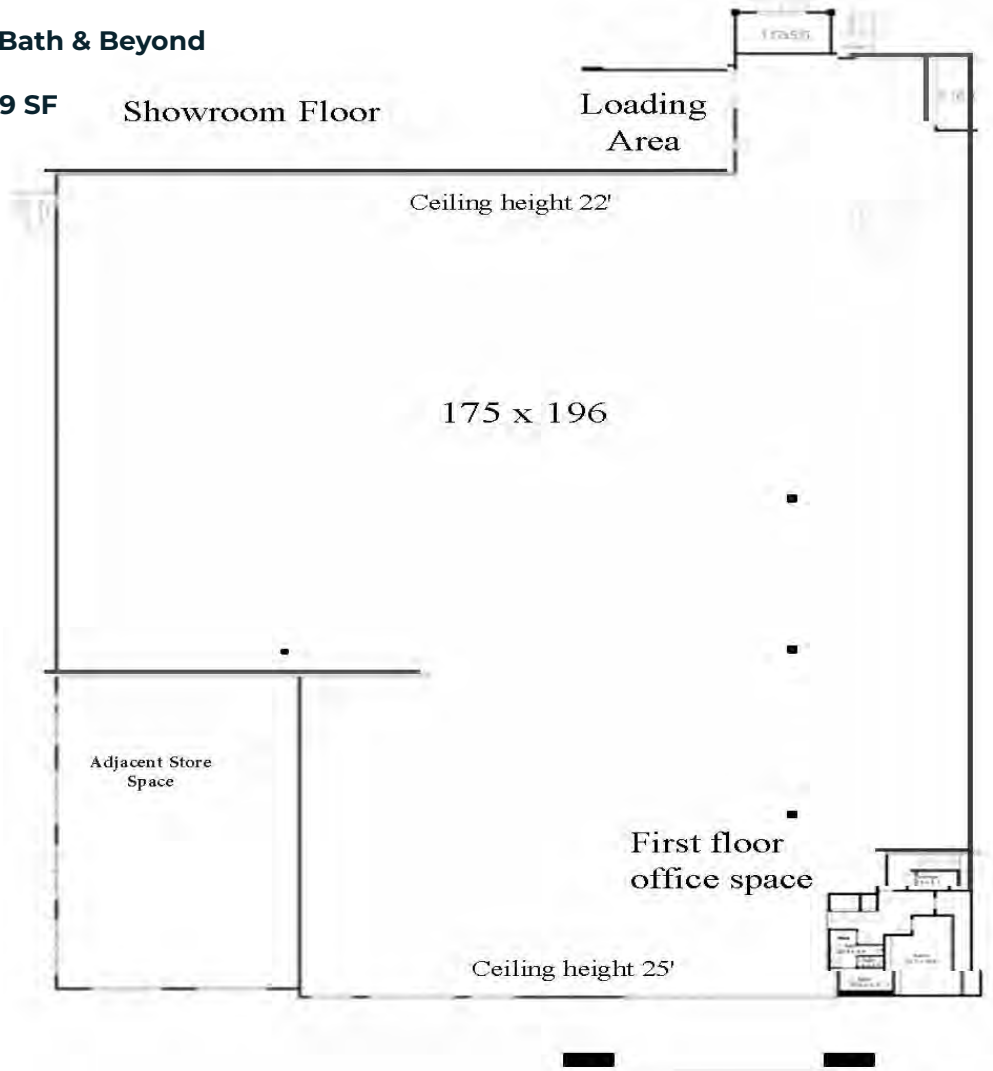
# FLOOR PLAN

- Suite 24
- Furniture Bell
- 21,315 SF

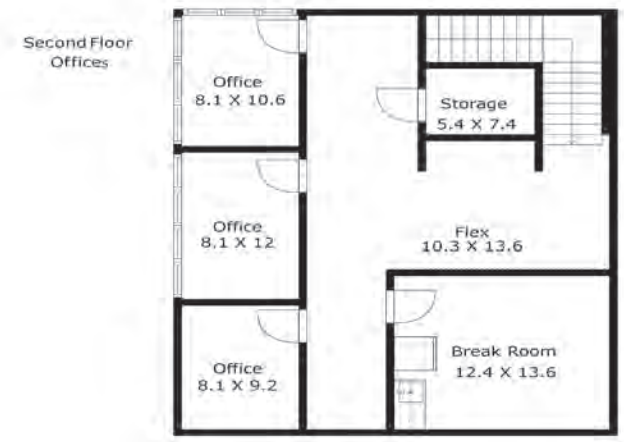


# FLOOR PLAN

- Suite 26
- Bed, Bath & Beyond
- 33,839 SF



See Related Items (Dimensioned Approximate, Not Dimensioned, Not to Scale)



See Related Items (Dimensioned Approximate, Not Dimensioned, Not to Scale)



**PATTERSON PLACE  
DURHAM, NC 27707**



**BRIAN GRABOWSKI**  
919.227.5698 DIRECT | 919.349.3569 MOBILE  
BGRABOWSKI@TRADEMARKPROPERTIES.COM

**SHELLEY BHATIA, CCIM**  
919.645.1421 DIRECT | 910.273.8474 MOBILE  
SBHATIA@TRADEMARKPROPERTIES.COM



**EXCLUSIVE BROKERS:**

**BRIAN GRABOWSKI**

919.227.5698 DIRECT | 919.349.3569 MOBLE  
BGRABOWSKI@TRADEMARKPROPERTIES.COM

**SHELLEY BHATIA, CCIM**

919.645.1421 DIRECT | 910.273.8474 MOBLE  
SBHATIA@TRADEMARKPROPERTIES.COM



**THIS IS OUR TRADEMARK**

THE INFORMATION CONTAINED HEREIN WAS OBTAINED FROM SOURCES BELIEVED RELIABLE; HOWEVER, TRADEMARK PROPERTIES MAKES NO GUARANTEES, WARRANTIES, OR REPRESENTATIONS AS TO THE COMPLETENESS OR ACCURACY THEREOF. THE PRESENTATION OF THIS PROPERTY IS SUBMITTED SUBJECT TO ERRORS, OMISSIONS, CHANGES OF PRICE OR CONDITIONS PRIOR TO SALE OR LEASE, OR WITHDRAWAL WITHOUT NOTICE.