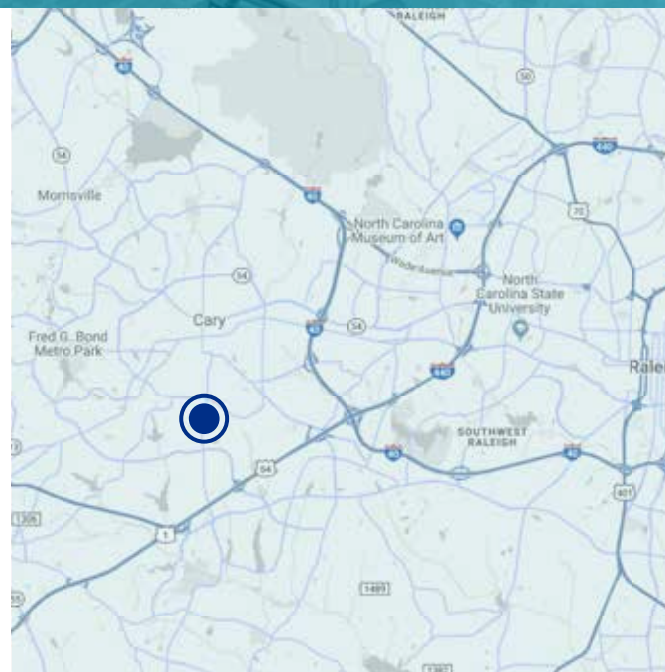


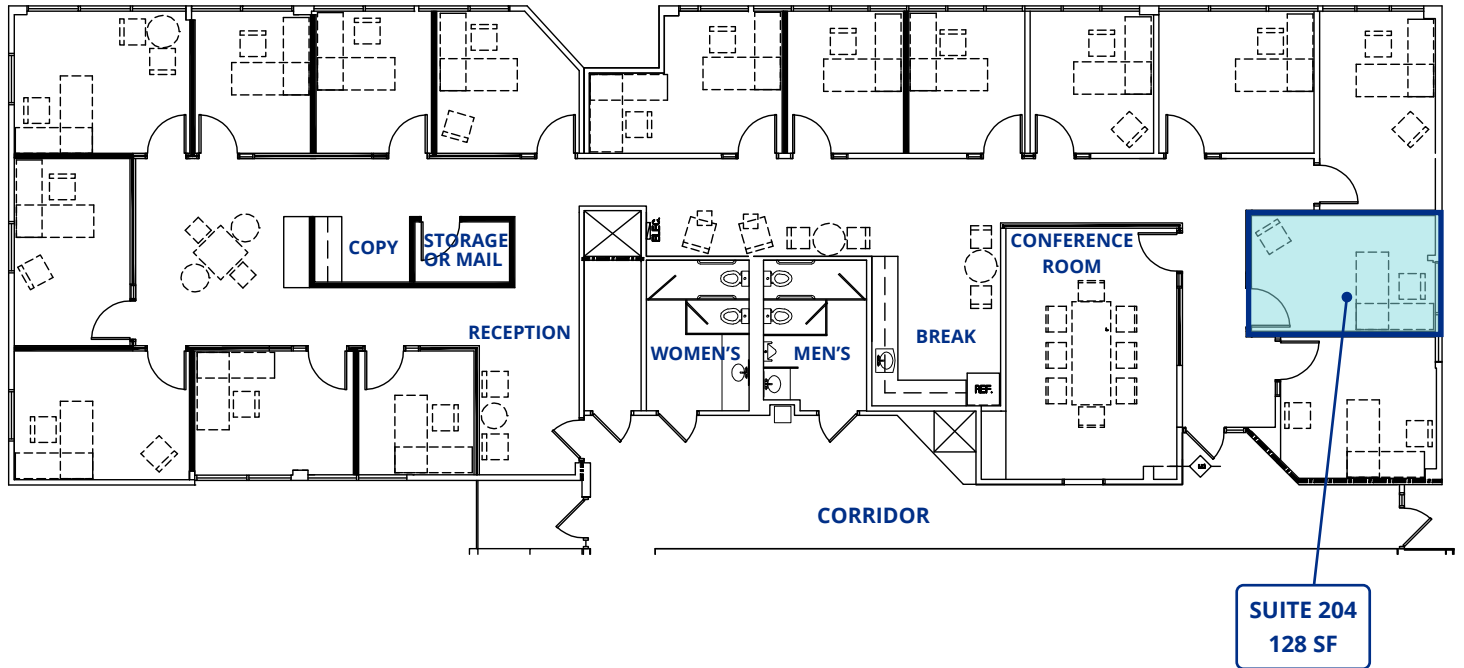
1155
KILDAIRE FARM ROAD
CARY, NC 27511



PROPERTY HIGHLIGHTS

- Shared office space
- Bright offices with natural light
- Modern design
- Quiet and private setting
- High-speed internet
- Newly renovated in early 2018
- Large, technologically enabled conference room
- Easy access to Raleigh, Apex and Holly Springs via US-1 and I-40





AVAILABILITY

SUITE	SIZE	RENT/MONTH	AVAILABLE
204*	128 SF	\$825	30 Days Notice

*Available if tenant can commit to a one-year lease

SHELLEY BHATIA, Vice President
sbhatia@trademarkproperties.com
919.645.1421 direct 910.273.8474 mobile



LOCATION DESCRIPTION

- Located directly off Kildaire Farm Road
- Down the street from the Shoppes of Kildaire, anchored by Trader Joe's and Staples
- Convenient access to I-40
- 15 minutes to RDU International Airport

SHELLEY BHATIA, Vice President
sbhatia@trademarkproperties.com
919.645.1421 direct 910.273.8474 mobile