



TRADEMARK
PROPERTIES

4110
ROMAINE ST.
GREENSBORO, NC 27401



**FOR
LEASE
10,427
SF**

DAN MCCLOY
919.227.5524 DIRECT
DMCCLOY@TRADEMARKPROPERTIES.COM

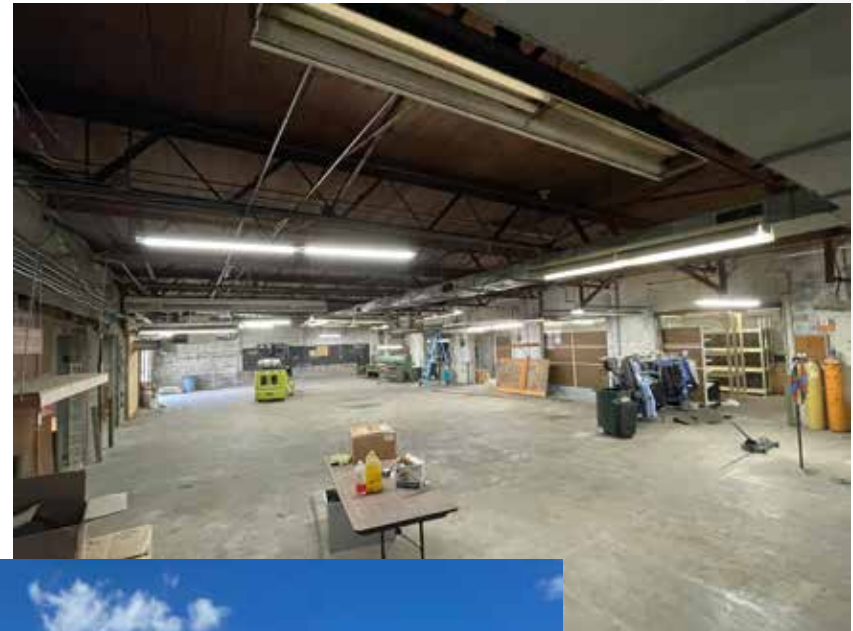
1001 WADE AVENUE SUITE 300, RALEIGH, NC 27605
TRADEMARKPROPERTIES.COM | 919-782-5552

4110 ROMAINE STREET
GREENSBORO, NC 27401

PROPERTY HIGHLIGHTS

- 10,427 SF building
- 7,289 SF Warehouse/Manufacturing space
- 3,183 SF Office space
- .57 acre Fenced yard
- 600 SF Storage shed
- Automatic gate
- Mostly conditioned
- Security System
- 3:1,000 Parking ratio
- Two Dock Doors
- One Drive-In (ramped)
- Located in West Greensboro right off Gate City Blvd. in a High Traffic area
- Minutes from I-40, I-73 and I-85

LEASE RATE:
\$8.95/SF



4110 ROMAINE STREET
GREENSBORO, NC 27401

PROPERTY PHOTOS

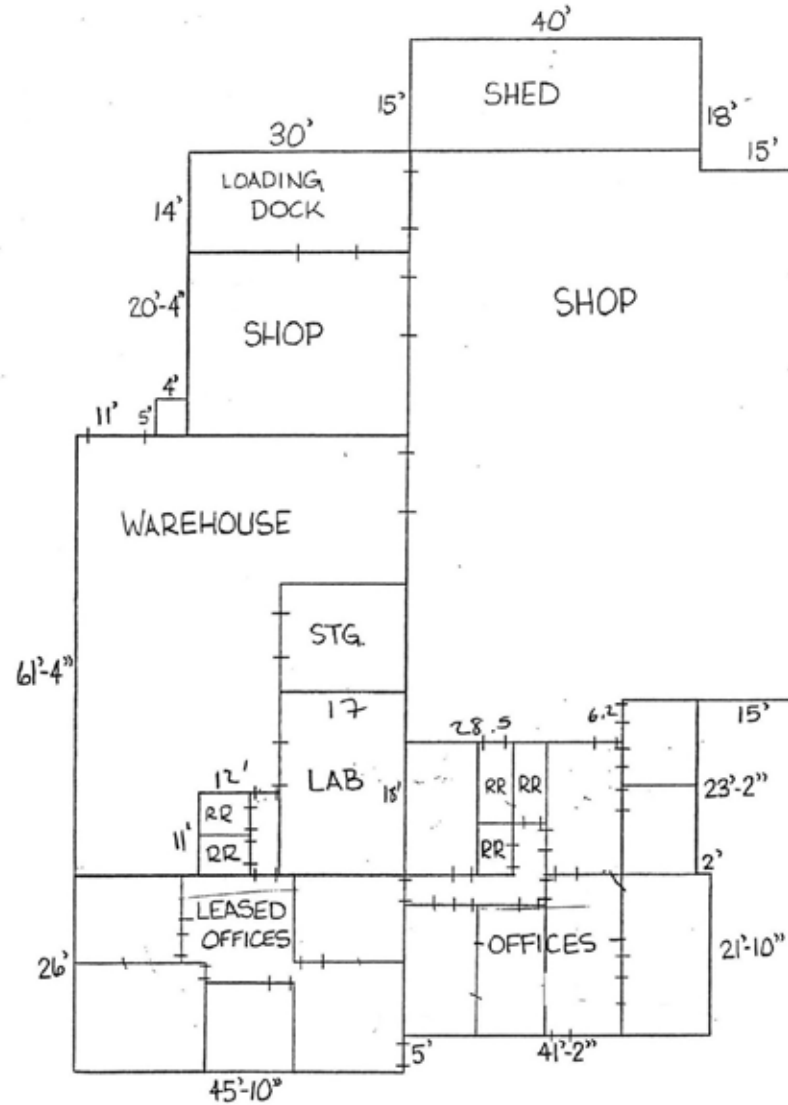


DAN MCCLOY
919.227.5524 DIRECT
DMCCLOY@TRADEMARKPROPERTIES.COM

1001 WADE AVENUE SUITE 300, RALEIGH, NC 27605
TRADEMARKPROPERTIES.COM | 919-782-5552

4110 ROMAINE STREET
GREENSBORO, NC 27401

FLOOR PLAN

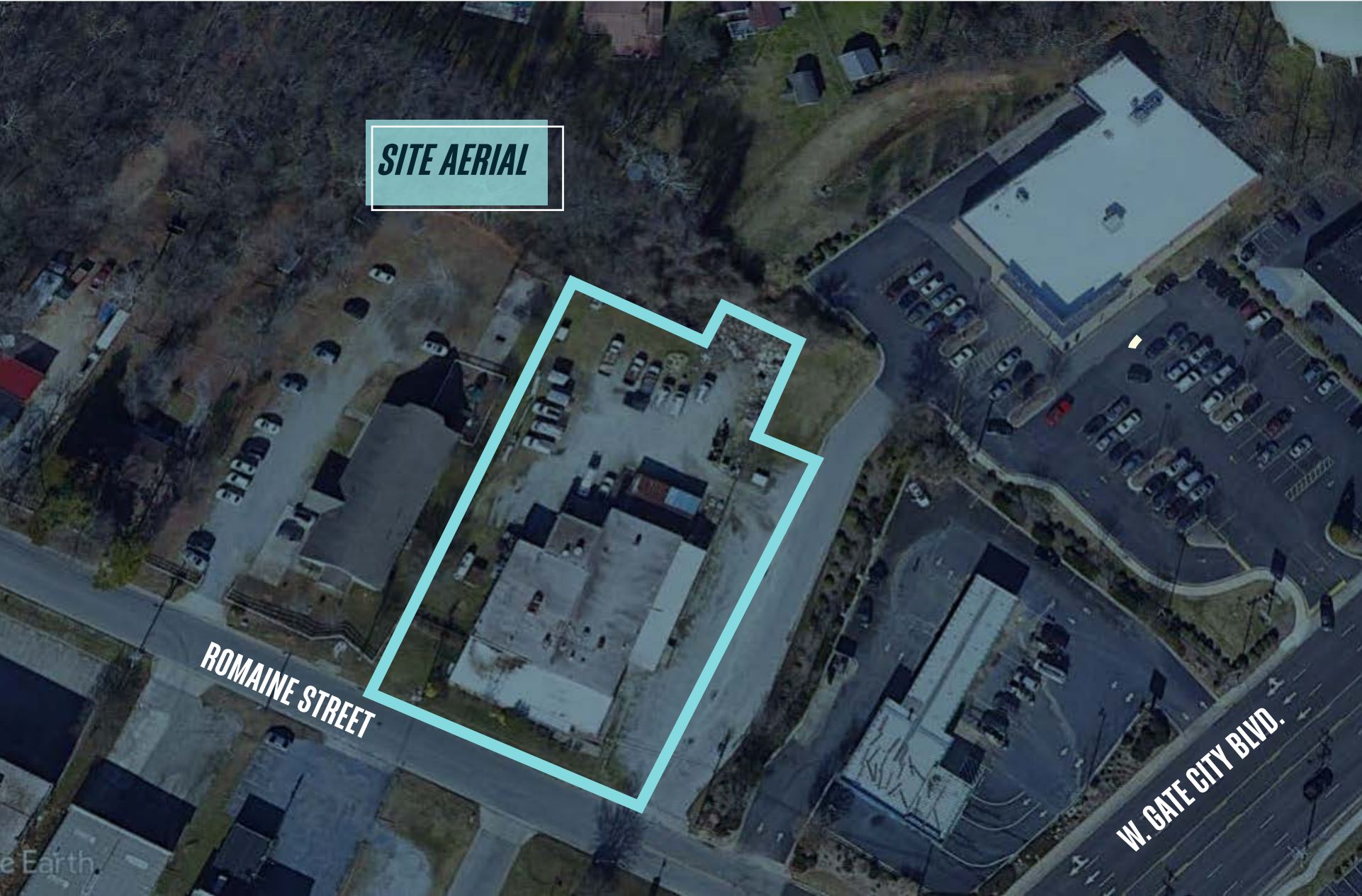


*FLOOR PLANS ARE A REPRESENTATION ONLY AND NOT TO SCALE.

DAN MCCLOY
919.227.5524 DIRECT
DMCCLOY@TRADEMARKPROPERTIES.COM

1001 WADE AVENUE SUITE 300, RALEIGH, NC 27605
TRADEMARKPROPERTIES.COM | 919-782-5552

SITE AERIAL

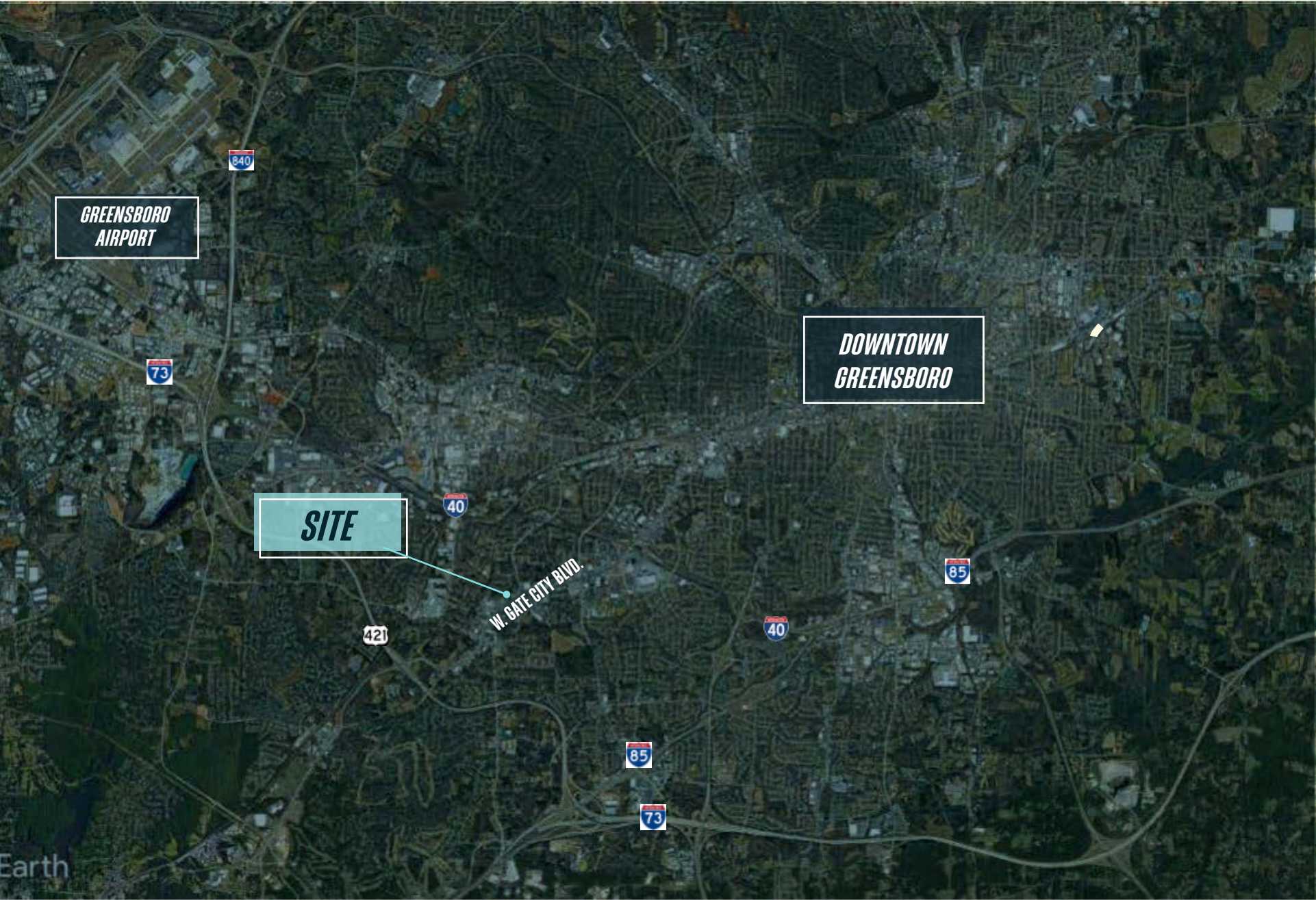


ROMAINE STREET

W. GATE CITY BLVD.

DAN MCCLOY
919.227.5524 DIRECT
DMCCLOY@TRADEMARKPROPERTIES.COM

1001 WADE AVENUE SUITE 300, RALEIGH, NC 27605
TRADEMARKPROPERTIES.COM | 919-782-5552



DAN MCCLOY
919.227.5524 DIRECT
DMCCLOY@TRADEMARKPROPERTIES.COM

1001 WADE AVENUE SUITE 300, RALEIGH, NC 27605
TRADEMARKPROPERTIES.COM | 919-782-5552



TRADEMARK
PROPERTIES

DAN MCCLOY
919.227.5524 DIRECT
DMCCLOY@TRADEMARKPROPERTIES.COM

1001 WADE AVENUE SUITE 300, RALEIGH, NC 27605
TRADEMARKPROPERTIES.COM | 919-782-5552